

To arrange for **Special Pickups**, participate in the residential **STOP** program, or get additional information on recycling, contact the **Sanitation Department** for your Town or City.:

💧 Town of Hempstead 378-2220  
<http://www.townofhempstead.org>: go to "Citizen Services" and click on the link for their S.T.O.P. program.

💧 Town of North Hempstead 767-4600  
<http://www.northhempstead.com> : click on "Solid Waste" and follow the links to their S.T.O.P. Program

💧 Town of Oyster Bay 677-5935  
<http://www.oysterbaytown.com>: their S.T.O.P. program is administered under their Environmental Resources Dept.

💧 City of Long Beach 431-1000  
<http://www.longbeachny.org>: go to the Town of Hempstead website for S.T.O.P. information.

💧 City of Glen Cove 676-2000  
<http://www.glencove-li.com>

If you would like to report someone dumping into or having an illegal connection to the storm sewer system. **Nassau County Illicit Discharge Hotline (516) 571-6863**

### How Do I Spot an Illicit Discharge or Connection?

- 💧 Look for pipes or hoses that lead to a storm drain or body of water
- 💧 Watch for discolored water, stains, unusual odors and abnormal plant growth in nearby lakes and streams

*Polluting Is Intruding !*



2005 Storm Water Management  
Logo & Slogan Contest Finalist

Megan McCune, Age 12



2006 Storm Water Management  
Logo & Slogan Contest Winner

Cody Goldsmith, Age 10



Nassau County  
Storm Water Management Program

Phone: 516-571-6850

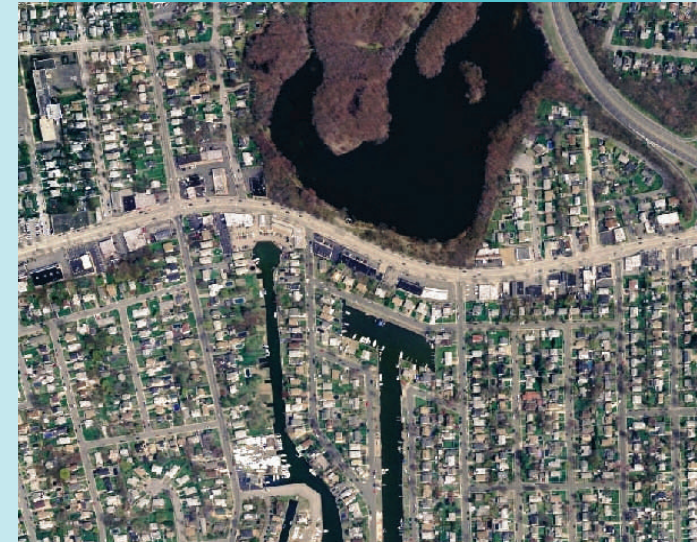
Fax: 516-571-6858

Illicit Discharge Hotline: 516-571-6863

E-mail: [stormwater2@nassaucountyny.gov](mailto:stormwater2@nassaucountyny.gov)

*Our Pollution Only  
Harms Ourselves !*

Storm Drain Awareness  
For  
Nassau County Homeowners



County of Nassau



THOMAS R. SUOZZI  
County Executive

## What is Storm Water?

Storm water comes from the precipitation that flows across the ground or pavement when it rains or when snow and ice melt.



The water seeps into the ground or flows into our storm drains. These are the drains that you see at street corners or low points on the sides of your streets.

Storm water runoff is a concern because of the pollutants it may carry as it is conveyed to the nearest body of water, such as a local stream, pond, harbor or the ocean.



## Why is Storm Water Pollution a Problem?

Unlike water that goes into our sanitary sewers, from our showers and toilets, for example, storm water, and all that it is carrying, is not treated before being discharged to our surrounding water bodies.



Storm water pollution can harm fish & other aquatic wildlife, kill native vegetation, destroy aquatic habitats, and make recreational areas unsafe and unpleasant.

Nutrients carried by storm water, or released into surface waters when they decay, may also cause undesirable algae and vegetative growth.

Substances carried by storm water that are considered to be pollutants are:

- Sediment, trash & debris
- Oil, grease, and toxic chemicals
- Soap and paint products from outdoor maintenance activities
- Pesticides and fertilizers from lawns and gardens
- Viruses, bacteria, and nutrients from pet waste and failing septic systems



Follow these simple steps to help reduce water pollution:

### Landscape and Gardening

- **Do not over-water.** If water flows off your yard onto your driveway or sidewalk, your system is over watering. Periodically inspect and fix leaks and misdirected sprinklers
- **Do not rake or blow leaves or clippings into the street, gutter or storm drain.** Instead, dispose of waste by composting or bagging it and placing it with your household waste for pickup



- **Follow directions on pesticides and fertilizers,** (measure, do not estimate amounts). Do not use if rain is predicted within 48 hours

- **Take unwanted pesticides** to a Household Hazardous Waste Collection Center to be recycled

Rain is natural; storm water isn't. Up to 70% of the pollution in our streams and waterways is carried there by storm water, and about half of the pollution that storm water carries comes from things we do in our yards and gardens!

### Pet Care

- **Always pick up after your pet.** Flush waste down the toilet or dispose of it in the trash. Leaving pet waste on the ground increases public health risks by allowing harmful bacteria to wash into the storm drain and eventually into our local waterways



### Pool Maintenance

- **Do not pump your chlorinated pool water into the storm drain.** Pool and spa water must be de-chlorinated and be free of excess acid, alkali or color to be allowed in the street, gutter or storm drain



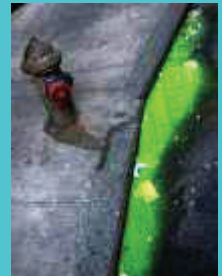
### Household Activities

- **Take items such as used or excess batteries, oven cleaners, automotive fluids, painting products, TVs and computer monitors to a Household Hazardous Waste collection center**

### Automotive



- **Take your vehicle to a commercial car wash whenever possible.** If you wash your vehicle at home, choose soaps or detergents labeled non-toxic, phosphate free or biodegradable. Vegetable and citrus-based products are typically safest for the environment
- **Do not allow wash water from vehicle washing into the street, gutter or storm drain.** If possible, wash car on an absorbent surface like your lawn
- **Monitor vehicle for leaks** and place a pan under leaks. Keep your vehicles well maintained to stop and prevent leaks
- **Never pour oil or antifreeze in the street, gutter or storm drain.** Recycle these substances at a service station, a waste oil collection center or used oil recycling center



- **Do not hose down your driveway, sidewalk or patio to the street, gutter or storm drain.** Sweep up debris and dispose of it in the trash