



EDWARD P. MANGANO
County Executive



CRAIG J. CRAFT
Commissioner

CERT All-Member Monthly Newsletter

MARCH 2015

Main Office:

516-573-9656

Email:

oemcert@nassaucountyny.gov

The CERT monthly newsletter is available on our webpage at:

<http://www.nassaucountyny.gov/agencies/OEM/CC/CERT/brief.html>

**CERT IS
WHAT
YOU
MAKE IT!**

INSIDE THIS NEWSLETTER:

Director's Report & Training Notice	1
CERT News	2
Event Calendars	3, 4
Escape Planning.	5
CPR Training	6
Car Emergency Kit	7
The Wrap Up	8

From the desk of the Director

James J. Kane

Fellow CERTs:

I hope you are all well, it's been a very busy winter a lot of snow, snow and more snow then ice and more snow.....well you get the point. I would like to thank all who have assisted us in the various activations we have had the past couple of months. Our first CERT Basic class for 2015 is in full swing and progressing nicely, I would like to thank our members who have been assisting us to keep our classes going strong. We have also had 40 people complete the CPR Classes and training is KEY ALWAYS. Eric and I are working on some more advanced trainings for the coming year, The Commissioner has also asked we will participate in the LI Marathon and the Jones Beach Air Show more info to follow with dates and what we will be assisting with my mid-march.

CART (county animal response team) Training will be held on March 25th 2015 at 7pm which will be given by Gary Rogers from the ASPCA. We would like everyone to know that Eric and I would like to hear your comments and concerns about CERT and what can be done to improve our program.

Jim

You asked... *We heard you:*

March brings CERTs 2 opportunities for Advanced Training:

CERT Leadership Training... Saturday March 21st at 11AM in the OEM Lecture Hall

County Animal Response Team Training... Wednesday March 25th at 7pm in the OEM Lecture Hall

An RSVP is required if you wish to attend one or both of these trainings; please email us at OEMCert@nassaucountyny.gov



CERT BASIC CLASS- in full swing



Our largest class in a long time 53 people!



Night #1: Tower Exercise



Night #3: Utility Safety Training



Night #3: Fire suppression training



CERT's newest members



On behalf of Nassau County Executive Ed Mangano, Eric Zausner and Jim Kane presented citations to both Michael Cassidy and Allan Mallenbaum for completing their basic CERT training. Welcome to the fold.



March 2015 - Upcoming Events

March 2015						
Sun	Mon	Tues	Wed	Thurs	Fri	Sat
1	2	3 BASIC CLASS # 4	4 Div.1 Meeting 7:30PM	5 RACES 7 PM	6	7
	9	10 BASIC CLASS # 5	11	12	13	14
15	16	17 BASIC CLASS # 6	18	19 Division Leaders 7 PM	20	21 CERT Leadership Training 11AM-4PM
22	23	24 BASIC CLASS # 7	25 CART Training Class 7PM	26	27	28
	30	31				

RACES/Comms Meeting - Thurs MAR 5th

OEM Lecture Hall
Time: 7:00 pm (1900)

Division Leaders Meeting - Thurs MAR 19th

OEM Lecture Hall
Time: 7:00 pm (1900)

Division #1- Winter Meeting- Wed. MAR 4th

OEM Lecture Hall
Time 7:30PM

CERT Basic Class Continues in the OEM Lecture Hall, Tuesdays 3/3-23

OEM Lecture Hall
Time: 7:00 pm (1900)

CERT Leadership Training, Sat. MAR 21st


OEM Lecture Hall
Time: 11:00AM-4:00PM

CART Training Class, Wed. MAR 25th

OEM Lecture Hall
Time 7:00PM



April 2015 - Upcoming Events

April 2015						
Sun	Mon	Tues	Wed	Thurs	Fri	Sat
			1	2 RACES 7 PM	3 PASSOVER 	4 PASSOVER 
5 	6	7	8 	9	10	11
12	13	14		16 Division Leaders 7 PM	17	18
19	20	21	22	23	24	25
26	27	28	29	30		

RACES/Comms Meeting - Thurs APR 2nd

OEM Lecture Hall

Time: 7:00 pm (1900)

Division Leaders Meeting - Thurs APR 16th

OEM Lecture Hall Time: 7:00 pm (1900)

We are looking to start the next Basic Class in April, we are close to obtaining a location. Once we have that, we will make the announcement



Escape Planning

Plan Ahead! If a fire breaks out in your home, you may have only a few minutes to get out safely once the smoke alarm sounds. Everyone needs to know what to do and where to go if there is a fire.

SAFETY TIPS

- » **MAKE** a home escape plan. Draw a map of your home showing all doors and windows. Discuss the plan with everyone in your home.
- » **KNOW** at least two ways out of every room, if possible. Make sure all doors and windows leading outside open easily.
- » **HAVE** an outside meeting place (like a tree, light pole or mailbox) a safe distance from the home where everyone should meet.
- » **PRACTICE** your home fire drill at night and during the day with everyone in your home, twice a year.
- » **PRACTICE** using different ways out.
- » **TEACH** children how to escape on their own in case you can't help them.
- » **CLOSE** doors behind you as you leave.

IF THE ALARM SOUNDS...

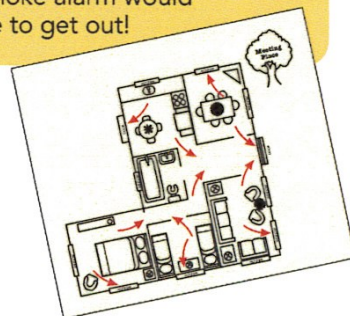
- » If the smoke alarm sounds, **GET OUT AND STAY OUT**. Never go back inside for people or pets.
- » If you have to escape through smoke, **GET LOW AND GO** under the smoke to your way out.
- » **CALL** the fire department from outside your home.



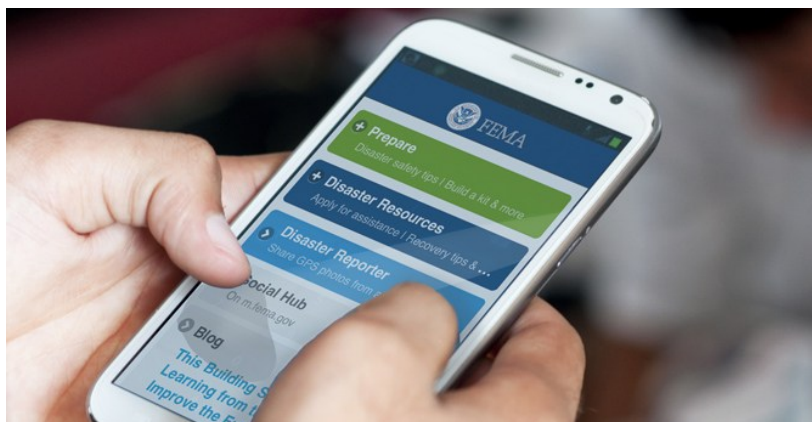
Your Source for **SAFETY** Information www.nfpa.org/education
NFPA Public Education Division • 1 Batterymarch Park, Quincy, MA 02169

FACTS

- ! According to an NFPA survey, only **one of every three** American households have actually developed and practiced a home fire escape plan.
- ! While **71%** of Americans have an escape plan in case of a fire, only **47%** of those have practiced it.
- ! **One-third** of American households who made an estimate thought they would have at least 6 minutes before a fire in their home would become life-threatening. The time available is often less. And only **8%** said their first thought on hearing a smoke alarm would be to get out!



CERTs: Download FEMA's *NEW* Smartphone App



A picture is worth a thousand words. As we move toward the 2015 Hurricane Season, help FEMA highlight the CERT program and demonstrate your capacity as citizens and trained volunteers to provide accurate, on-the-ground situational awareness and augment the capabilities of professional responders during disasters.

As a CERT volunteer, you play an integral role in disaster reporting in your community. FEMA Administrator Craig Fugate is calling upon CERT volunteers throughout the country, including you, to download the FEMA mobile app, which includes Disaster Reporter.

Why You Should Use Disaster Reporter

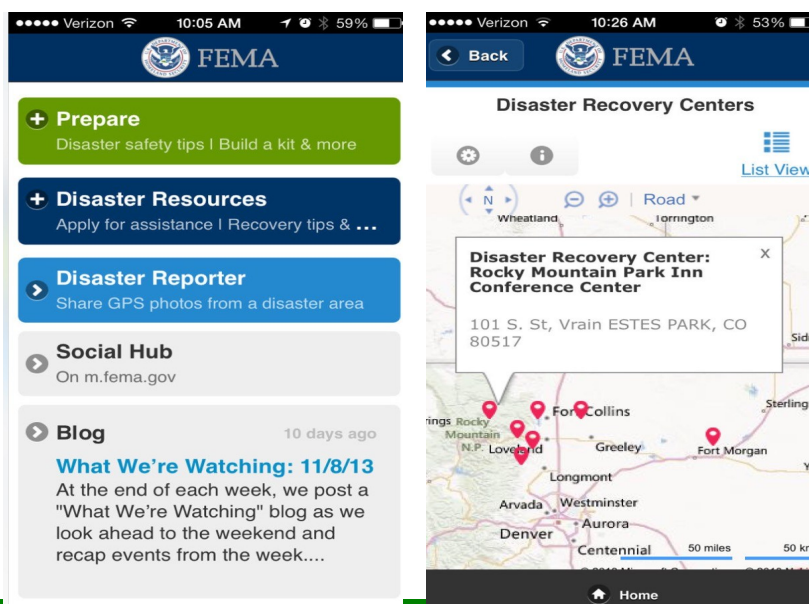
Here are the top four reasons:

1. It provides FEMA responders, local emergency managers, CERT volunteers, and the public with greater visibility into disaster situations across the United States. This can help expedite emergency response efforts.
2. It provides a reliable source for viewing disaster events around the country.
3. It's a great free resource to download straight to your mobile phone.

Your support efforts in an impacted area will be displayed publicly on an online map.

Other Features in the App

In addition to the Disaster Reporter tool, the FEMA App also has preparedness tips, an interactive emergency kit checklist, recovery safety tips, open Red Cross Shelters, open FEMA Disaster Recovery Centers, and FEMA blog posts. The app is available for Android, Apple, and Blackberry. !



Car Emergency Kit

You never know where you'll be in the event of a disaster or emergency. Below is a list of suggested emergency supplies for two adults in a small car for 2-3 days. Modify according to your own personal needs and favorite foods! Make sure you have a cell phone and keep it charged. Keep an automobile cell phone charger cable in your car too. If you don't have electricity, you'll always have the car battery to revive your phone!

Store in zip-lock bags and put in clear plastic storage box:

- Prescriptions and over the counter medications you use regularly, with dosages clearly marked
- Spare prescription eye glasses
- Toiletries (tooth paste & brushes, sunscreen, etc.)
- Medic Alert information in writing (allergies, meds, health issues)
- Emergency out-of-state contact phone number
- Money in small denominations (\$100 in 1's, 5's & 10's)
- Notepad, pencil, large marking pen
- Basic First Aid kit (disposable latex-free gloves, assorted sterile bandages, alcohol wipes, anti-biotic cream, gauze pads, paper tape, aspirin, Tylenol, sturdy scissors)
- Paper towels
- Toilet paper
- Baby wipes (large size)
- Sanitary napkins or Depends (wound dressings)

Store in clear plastic box:

- Sturdy plastic mugs with handles
- Small sturdy spoons, forks, knives (in zip lock)
- Canned (with pull tabs): soups, tuna, broths (you can drink them cold)
- Complete nutritional drinks in your favorite flavors
- Sealed bags of nuts, raisins or other dry snacks
- Energy and protein food bars

Store in clear plastic box or duffle bag (spare batteries in zip locks):

- Free-standing battery operated camping flashlight with spare battery
- Headlamps and spare batteries
- Hand crank radio with spare batteries
- Gloves (well fitting, heavy)
- Duct tape
- Spare zip-lock bags in several sizes
- 2 wool blankets
- Small tarp

Re-package items as suggested. Small items, such as headlamps and spare batteries, may be kept in glove compartment. Remember it might be raining hard and your supplies must stay dry. Only keep necessary items in your car, BUT...keep those jumper cables and tool kit and know how to use them!



“Never doubt that a small group of thoughtful, committed citizens can change the world; indeed, it's the only thing that ever has.”

-Margaret Mead

***Deadline for submission of articles,
photos and news for the next
CERT Newsletter is :
March 20th.***

Division 1

Division Supervisor - Bill Pavone
nassaucertdiv1@yahoo.com

Division 2

Division Supervisor - Louis Madden
firebuff330@gmail.com

Division 3

Division Supervisor - Dave Nieri
dnieri@yahoo.com

Division 4

Division Supervisor - Ken English
floralparkcert@gmail.com

**Division 5 - Campus
CERT**

Division Supervisor -
Stephanie Gobbo
Stephanie.Gobbo@liu.edu

CERT Director Jim Kane
jkane@nassaucountyny.gov

CERT Deputy Director Eric Zausner
ezausner@nassaucountyny.gov



CERT BASIC COURSE

**THE NEXT CERT BASIC COURSE WILL TAKE PLACE ON:
FEBRUARY 10, 17, 24 & MARCH 3, 10, 17 & 24
SIGN UPS ARE ONGOING—CALL THE OFFICE WITH ANY QUESTIONS.**

OEMCERT@NASSAUCOUNTYNY.GOV

(Current CERT Members may attend any class as a refresher)