

THIS IS NASSAU

# HISPANIC COMMUNITY

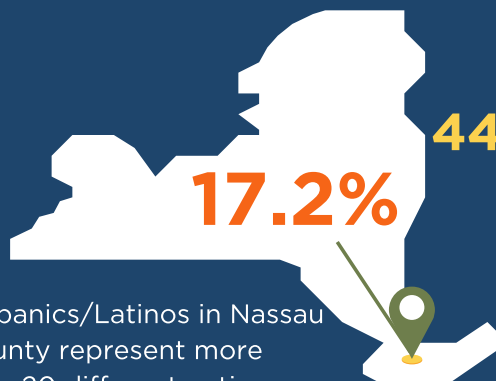
KEY FACTS

SEPTEMBER 2020

## ORIGINS OF HISPANIC/LATINO RESIDENTS

Four Largest Groups

Salvadoran	53,534
Puerto Rican	35,645
Dominican	27,827
Colombian	17,031



Hispanics/Latinos in Nassau County represent more than 20 different nations

44.0% Increase

of Hispanic/Latino population from 2007-2017, more than 72,000 residents

7.8%

HISPANIC/LATINO HOUSEHOLDS RECEIVE FOOD STAMPS

5.0% of Nassau's Total Households Do

\$85,256

MEDIAN HISPANIC/LATINO HOUSEHOLD INCOME

Median Household Income in Nassau is \$111,240

54,041

HISPANIC/LATINO HOUSEHOLDS

72.0%

LABOR FORCE PARTICIPATION RATE

12.1%

HISPANICS/LATINOS LIVE BELOW POVERTY LINE

5.7% of Nassau's Total Population Does



34,117

HISPANIC-OWNED BUSINESSES

2,709

HISPANIC/LATINO VETERANS



72.0% HAVE A HIGH SCHOOL DIPLOMA

91.2% of Nassau's Total Population Does

22.7% HAVE A BACHELOR'S DEGREE OR HIGHER

45.2% of Nassau's Total Population Does

33

MEDIAN AGE OF HISPANIC/LATINO LIVING IN NASSAU

Median Age of Nassau's Total Population is 42



16.0%

HISPANIC/LATINO RELY ON PUBLIC TRANSPORTATION

### SOURCES:

U.S. Census Bureau, 2018 American Community Survey 5-Year Estimates Data Profiles

Hispanic or Latino Origin by Race  
Language Spoken at Home by Ability to Speak English  
Household Income in the Past 12 Months, Hispanic or Latino  
Receipt of Food Stamps/SNAP in the Past 12 Months, Hispanic or Latino

Educational Attainment  
Survey of Business Owners: Statistics for All Firms  
Means of Transportation to Work, Hispanic or Latino  
Retrieved from [census.gov/data](https://census.gov/data)



NASSAU COUNTY COMPTROLLER JACK SCHNIRMAN

IN PARTNERSHIP WITH NASSAU COUNTY OFFICE OF HISPANIC AFFAIRS

# CORONAVIRUS (COVID-19) IMPACT

## on the Hispanic Community

COVID-19 has reinforced what we all know are the longstanding social, economic, and health disparities in the Hispanic community. It is critical to take actions at local, state and national levels to provide communities of color equal access to resources.

### 133.5

**AGE-ADJUSTED DEATH RATE PER 100,000 POPULATION IN NASSAU**

Second Highest Behind Blacks, with a Death Rate of 189.5 in Nassau

### 220,000

**SHARE OF JOBS LOST ACROSS LONG ISLAND**

Include low-paying jobs, workers with low levels of education and Hispanic/Latino workers

### 27.0%

**OF THE HOSPITALITY INDUSTRY WAS MADE UP OF HISPANIC AND LATINO EMPLOYEES**

Hospitality sector was the hardest hit sector on Long Island, more than two-third of total hospitality jobs were lost between February to April 2020

**NASSAU COUNTY HISPANIC/LATINO RESIDENTS MADE UP**

### 13.0% OF COVID-19 FATALITIES

Total Hispanic/Latino Population in Nassau is 17.2%

**THE PANDEMIC HIGHLIGHTED THE IMPORTANCE OF EQUITABLE ACCESS TO MENTAL HEALTH SERVICES**

U.S. Census Week 13 Household Pulse Survey from August 19 to August 31 (Hispanic or Latino): New York

Feel nervous, anxious, or on edge

### 62.4%

Feel down, depressed, or hopeless

### 55.1%

**HISPANIC/LATINO HOMEOWNERS AND RENTERS ARE STRUGGLING TO MEET PAYMENTS IN NEW YORK**

Analysis of U.S. Census Week 13 Household Pulse Survey from August 19 to August 31 by Percentage of Household and Race

Slight or no confidence in ability to pay next month's rent on time

### 34.8%

Slight or no confidence in ability to pay next mortgage payment on time

### 5.4%

Missed or deferred last month's rent

### 19.9%

Missed or deferred last mortgage payment

### 8.8%

### 59.2%

**HISPANIC/LATINO ADULTS AGES 18 TO 64 DRAWING ON INCREASING CREDIT CARD DEBT WHOSE FAMILIES LOST JOBS, WORK HOURS, OR WORK-RELATED INCOME DURING COVID-19 NATIONALLY**



### 23.4%

**HISPANIC/LATINO WORKERS ARE ABLE TO WORK FROM HOME IN NEW YORK**

### 29.0%

According to Brookings Institute, 29% of Hispanic/Latino families nationally have had someone in their household lose their job since businesses across the country began shutting down due to COVID-19.



### 11.2%

**Uninsured Rates for Hispanic/Latino 18 Years and Older in New York**

### 1 IN 4

HISPANIC/LATINO HOUSEHOLDS WITH CHILDREN

**Did not have sufficient food due to a lack of resources in June 2020 at a national level**



#### SOURCES:

HR&A Advisors. "Long Island COVID Economic Impact," 8 June 2020. Retrieved from [nassaucountyny.gov/DocumentCenter/View/29740/200708-Long-Island-Covid-Impact-Final-Report---FINAL](https://nassaucountyny.gov/DocumentCenter/View/29740/200708-Long-Island-Covid-Impact-Final-Report---FINAL).  
New York State Department of Health. Fatalities by Race/Ethnicity. Data updated as of 9/12/2020. Retrieved from [coronavirus.health.ny.gov](https://coronavirus.health.ny.gov).  
Brookings Institute. "About 14 million Children in the US are Not Getting Enough to Eat," 9 July 2020. Retrieved from [brookings.edu](https://brookings.edu).  
Urban Institute. "How COVID-19 Is Affecting Black and Latino Families' Employment and Financial Well-Being," 6 May 2020. Retrieved from [urban.org](https://urban.org).  
U.S. Census Bureau. Housing Tables, by Select Characteristics: New York. Week 13 Household Pulse Survey: August 19 - August 31. Retrieved from [census.gov](https://census.gov).  
U.S. Census Bureau. Current Health Insurance Status, by Select Characteristics: New York. Week 13 Household Pulse Survey: August 19 - August 31. Retrieved from [census.gov](https://census.gov).  
U.S. Census Bureau. Teleworking during the Coronavirus Pandemic, by Select Characteristics: New York. Week 13 Household Pulse Survey: August 19 - August 31. Retrieved from [census.gov](https://census.gov).  
U.S. Census Bureau. Symptoms of Anxiety Experienced in the Last 7 days, by Select Characteristics: New York. Week 13 Household Pulse Survey: August 19 - August 31. Retrieved from [census.gov](https://census.gov).  
U.S. Census Bureau. Symptoms of Depression Experienced in the Last 7 days, by Select Characteristics: N.Y. Week 13 Household Pulse Survey: August 19 - August 31. Retrieved from [census.gov](https://census.gov).



**NASSAU COUNTY COMPTROLLER JACK SCHNIRMAN**  
**IN PARTNERSHIP WITH NASSAU COUNTY OFFICE OF HISPANIC AFFAIRS**