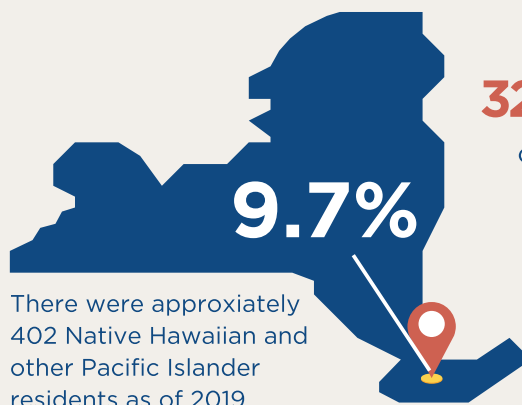




# ASIAN AMERICANS AND PACIFIC ISLANDERS IN NASSAU COUNTY

## FIVE LARGEST GROUPS

Asian Indian	51,513
Chinese	36,168
Korean	13,246
Filipino	11,126
Japanese	1,651



**32.6% Increase**

of Asian American and Pacific Islander population from 2010-2019, with more than 130,000 residents in Nassau.

**9.5%** WERE MILITARY VETERANS AS OF 2019



**46.8%**

Household Income Over \$150K  
(Households with a householder who was Asian alone)

**ASIAN AMERICANS:**

**92.5%**

Held a high school diploma

**64.3%**

Held a Bachelor's Degree or higher

**NATIVE HAWAIIANS AND OTHER PACIFIC ISLANDERS:**

**74.4%**

Held a high school diploma

**23.6%**

Held a Bachelor's Degree or higher

91.4% of Nassau's Total Population Held a High School Diploma

46% of Nassau's Total Population Held a Bachelor's Degree or Higher



**61,935**

Asian Americans and Pacific Islanders spoke a language other than English at home

They spoke Persian, Gujarati, Hindi, Urdu, Punjabi, Bengali, Nepali, Malayalam, Kannada, Mandarin, Lao, Cantonese, Japanese, Korean, Vietnamese, Thai, Tagalog, Arabic, or other Asian and Pacific Island languages



**15,866**

Asian-Owned Businesses (as of 2012)

**66.7%**

Labor force participation rate as of 2019

Overall County rate was 65.1%

## SOURCES:

U.S. Census Bureau, 2019 American Community Survey 5-Year Estimates Data Profiles

ACS Demographic and Housing Estimates  
Language Spoken at Home by Ability to Speak English  
Household Income in the Past 12 Months (in 2019 Inflation-Adjusted Dollars) (Asian Alone Householder)

Employment Status  
Educational Attainment  
Survey of Business Owners: Statistics for All Firms  
Retrieved from [data.census.gov](https://data.census.gov)

MAY 2021



@NassauCountyComptroller



@NCComptroller



@NCComptroller