



BRUCE A. BLAKEMAN
NASSAU COUNTY
EXECUTIVE

**Nassau County Department of Human Services
Office of Mental Health, Chemical Dependency
and Developmental Disabilities Services**

**Directions in Nassau County
Mental Health, Substance Abuse, and
Developmental Disabilities Resources**

**Town Hall
June 09, 2023**



**Office of
Mental Health**



**Office of Addiction
Services and Supports**

Today's Agenda

- **Nassau County Office of Mental Health, Chemical Dependency & Developmental Disabilities Services**
 - Omayra Perez, R-LCSW, Director of Community Services
 - CNG, Keynote Speaker, Youth ACT Team Services/Crisis Stabilization
 - Nassau County Crisis Response System Panel Presentation, Calle Panakos
- **NYS Office of Mental Health (LIFO)**
 - Martha A. Carlin, PsyD, Director-Long Island Field Office
 - NYS OMH Program Presentations Erin Rostron, LMSW
- **Nassau County Children's Mental Health**
 - Kathryn Artesani, LMSW, Coordinator of Children Mental Health Services
 - NYS OMH Children Program Presentations
- **NYS Office of Addiction Services & Supports (LIRO)**
 - Brian Patterson, MBA, CASAC-Master, Regional Coordinator of Long Island
 - NYS OASAS Program Presentations
- **CN Guidance & Counseling Services Youth ACT Services/Crisis Stabilization**
 - Victoria Guercio & Nancy Managaut
- **Behavioral Health Awareness Training & Education**
 - Calle Panakos, MSHS, Director of Education & Training



**Office of
Mental Health**



**Office of Addiction
Services and Supports**

Introduction:

Omayra Perez, LCSW

Director of Community Services

Nassau County Office of Mental Health, Chemical Dependency and Developmental Disabilities

60 Charles Lindbergh Blvd #160,

Uniondale, NY 11553

Omayra.Perez@hhsnassaucountyny.us

Martha A. Carlin, Psy.D

Director – Long Island Field Office

New York State Office of Mental Health (OMH)

998 Crooked Hill Road Building 45, 3rd Floor

West Brentwood, NY 11717

Martha.Carlin@omh.ny.gov



**Office of
Mental Health**



**Office of Addiction
Services and Supports**

Introduction:

Brian Peterson, MBA, CASAC-Master

Regional Coordinator

NYS-OASAS Long Island Regional Office

Pilgrim Psychiatric Center, Building #1

998 Crooked Hill Road

West Brentwood, New York 11717-1087

Brian.Peterson@oasas.ny.gov



**Office of
Mental Health**



**Office of Addiction
Services and Supports**

Youth ACT Team

CN Guidance

Director of ACT Team Services: Victoria Guercio, LMFT

Youth ACT Team Leader: Gabriela Giron, LMSW

A little about Us

- CN Guidance
- Mission statement: “CN Guidance & Counseling Services, a nonprofit organization, inspires and catalyzes recovery for people living with mental health and substance use conditions through innovative and person-centered integrated clinical treatment, counseling, housing and support services—empowering those served to live healthy and fulfilling lives.”



What We do

- Assertive Community Treatment (ACT)- mobile, multidisciplinary mental health treatment team.
- Trained professionals conduct various evidence based, best practices to the high-risk youth population
- Services include, but are not limited to: psychiatric medication management and administration, individual and group psychotherapy, psychoeducation, educational/vocational support, rehabilitation, skills building and case management

Who we serve



- Eligible youth must be between 10-21 years old
- Must be diagnosed with serious mental illness as per DSM 5
- Youth who have a treatment history or are at risk for frequent psychiatric inpatient hospitalizations, residential programs, juvenile justice involvement, truancy issues.
- Ideal for youth/families, whose needs were not met by traditional treatment delivery (typically outpatient services), which could be due to lack of engagement in services

Who we are

- A multidisciplinary team who all work together to serve the clients and family.

- Team leader: Supervisory clinical and administrative responsibilities, supervises staff activities and daily meetings with team to provide direction regarding individual cases; coordination between staff and other services in community; available 24/7.
- 3 Licensed mental health professionals: Conducts direct, face to face/collateral contacts with and identified families in the community, crisis intervention, in charge of maintaining electronic health record documentation, coordination of services and discharge planning.
- Psychiatrist: Provides psychiatrist and medical assessment and treatment, in charge of medication administration; when psychopharmacological treatment is used, they will develop plan including identification of target symptoms, dosages, and ways to monitor and promote medication compliance.



Who we are cont.



- Program Assistant: administrative duties, such as scheduling interviews, clerical and office operations, ordering office supplies, making business card and arranging maintenance of department vehicles. Responsible for managing medical records, accounting and budget records.
- Youth Peer advocate: Serve as a role model for the youth clients. Provides emotional, educational, vocational support, healthy coping skills, self-help techniques, education about rehabilitation and recovery, etc.
- Family Peer Advocates: Serves as role model for recipient and/or their families, teaches family practice strategies to support youth's positive behaviors and encourage families to be compliant with treatment team's recommendations.



Contact info

Please do not hesitate to reach out with any questions or concerns:

- Director of ACT Services: Victoria Guercio, LMFT,
vguercio@centralnassau.org Work Cell: 516-728-4781
- Team Leader: Gabriela Giron, LMSW, ggiron@centralnassau.org,
Work Cell: 516-388-4195

Thank you so much!

Long Island's Intensive Crisis Stabilization Center

Services

1. Triage, screening, and assessment
2. Therapeutic intervention
3. Peer support
4. Ongoing observation
5. Care collaboration with a recipient's family or other important 'collaterals'
6. Psychiatric Diagnostic Evaluation and Plan
7. Psychosocial Assessment
8. Medication Management
9. Medication for Addiction Treatment / Medication for Addiction Treatment (MAT)
10. Medication Administration and Monitoring
11. Mild to Moderate Detoxification Services - and -
12. Discharge, aftercare planning, and follow-up

Governance Structure

Steering Committee
primarily driven by

**Consumer & Family
Advisory Council**
of CN Guidance

Service recipients/recovering clients, family members, clinical and administrative experts, public health professionals will assure **community voices** are continually heard and included

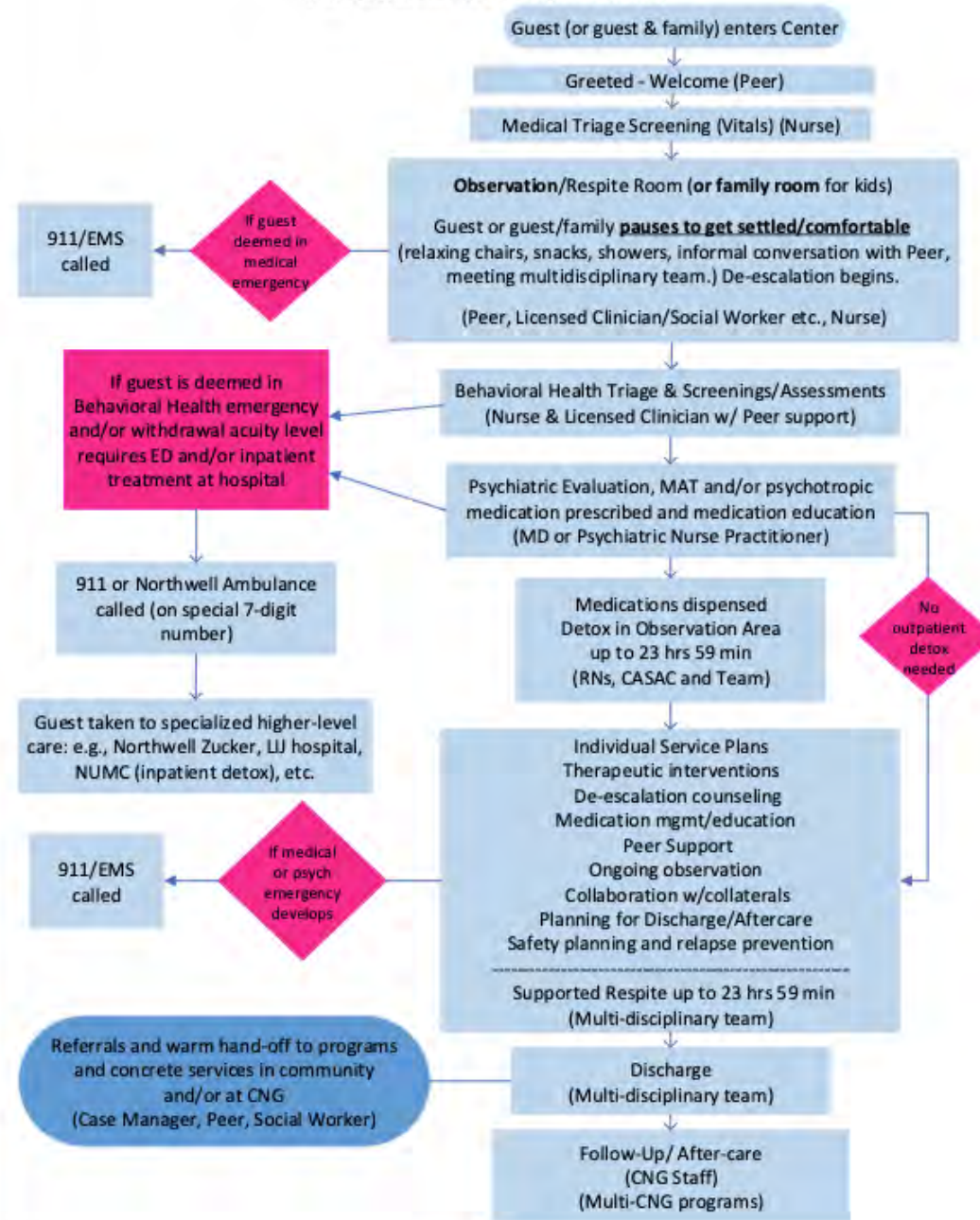


Proposed Stakeholder Workgroups

- Governing Body
- Partners
- Faith Based Community
- Family & and Consumers
- School Districts/BOCES/ Colleges
- NC Emergency Crisis System
- SC Emergency Crisis System
- Crisis Respite & Intensive Services
- Homeless/Shelter & DSS



Simplified Guest Flow Chart
(How guests will move through the Center)



CRISES—Crisis Reliability Indicators Supporting Emergency Services framework

- **Door to Diagnostic Evaluation (Door to Doc[tor], time from arrival to provider contact)**
- **Left Without Being Seen (percent who leave without being evaluated by qualified staff)**
- **Median Time from Arrival to Departure**
- **Median Time from Disposition (Discharge) Decision to Departure**
- **Volume/visits**
- **Denied Referrals Rate (percent denied for any reason other than overcapacity)**
- **Community Dispositions Rate (percent who are discharged to community-based settings)**
- **Readmissions, Return Visits (72-hr, 30-day)**
- **Consumer Satisfaction (% Likelihood to Recommend)**
- **Family Involvement**
- **Law Enforcement Drop-off Time (time between police drop-off and police departure)**
- **Median Time from ED Referral to Acceptance for Transfer (into the Crisis Center)**

Additional Measures:

- **How the guest arrived at the ICSC (police, walk in, family/friend drop off, etc.)**
- **Attendance at referral appointments (post-discharge, with programs named in the discharge plan)**
- **Social Determinants of Health (SDoH)**

Nassau County Crisis Response Services



**Office of
Mental Health**



**Office of Addiction
Services and Supports**

Nassau County Behavioral Health Helpline

Target Population: Any individual within Nassau County

Services Offered: Telephonic Referrals for Mental Health and Substance community treatment, programs, supports and general information. The intake hotline for Nassau County Mobile Crisis.

Hours of Operation: 24hrs

Contact Information: 516-227-8255 (TALK)

Presenter: Maria Yager



Since the launch of 988 on 7/16/22, LICC received almost **4,000 calls** on that line as of 3/23/23. That is an **89% increase** in calls from that same time period a year ago (7/16/21 – 3/23/22).

988 counselors were able to **deescalate and lower** caller lethality on **86%** of calls. Only 3% of calls have ended with an intervention.



Office of
Mental Health



Office of Addiction
Services and Supports



- 988 is the three-digit number for the National Suicide Prevention Lifeline
- Direct connection to caring support for anyone in mental health distress. May include:
 - thoughts of suicide
 - substance use crisis
 - emotional distress
- Free
- Can be contacted by phone, chat or text
- Spanish line option
- Has interpretation services available in over 150 languages



**Office of
Mental Health**



**Office of Addiction
Services and Supports**



What happens when I call 9-8-8...

A trained, caring and compassionate crisis counselor will answer your call (or chat or text) and invite you to talk about what is going on.

They will:

- Listen to your story
- Ask suicide safety assessment questions
- Collaborate with you on a safety plan and/or next steps
- Provide you with local resources, if wanted
- Offer you a follow-up call, if needed



Which Number to Call: 9-1-1 or 9-8-8?

When you've got a medical, police, fire or rescue **emergency**, you call 9-1-1

When you have an urgent **suicide or mental health crisis** need, you call 9-8-8

9-1-1 is focused on **dispatching** EMS, Fire and PD

9-8-8 is focused on **resolving the crisis telephonically** (or via chat/text) – using the least invasive intervention

Over 95% are stabilized through crisis lines without any type of in-person response needed

South Shore Guidance Center Nassau County Mobile Crisis Team

Target Population: Any individual within Nassau County

Services Offered: Assess current mental health and safety; determine best level of care for situation; de-escalate crisis; initiate referrals to OMH licensed clinics; facilitate psychiatric evaluation in the hospital under MH Law 9.58; and collaborate with the NCPD/EMS/NAS-TAC in the community as well as through the 911 system

Hours of Operation: 8am-12am 7/365

Contact Information: 516-227-TALK (8255)

Presenter: Christine Bogle



**Office of
Mental Health**



**Office of Addiction
Services and Supports**

Intensive Crisis Stabilization Center- ICSC

- **Central Nassau Guidance & Counseling Services**

- **Target Population:**

- Individuals of every age living on (or passing through) Long Island who are experiencing an acute mental health and/or substance use crisis.
- **Services Offered:** using a strengths-based, recovery-oriented, trauma-informed, and evidenced-based approach so each person and their family have enhanced capacity to sustain healthy interactions, healthy emotional attachment, and functional relationships.

- Licensed Therapists
- Psychiatrist
- Peer Specialists
- Program Director
- Registered Nurses
- Administrative Support

- **Contact Information:**

516-822-6111

Presenter: Jacklyn McCarthy



**Office of
Mental Health**



**Office of Addiction
Services and Supports**

MHA Turquoise House

Target Population:

- Adults who need short term respite from their current home environment
- Self-referral

Respite Services Offered: (In partnership with NUMC)

- Hospital Diversion program
- Peer-run temporary respite care for 1 – 7 nights
- Develop goals to address current or future crises and a plan to improve life circumstances

Hours of Operation:

- 24 hours/day, 7 days/week

Contact Information: Keri Butler

- **Phone:** (516) 489-0100 Ext. 2
- **E-mail:** kbutler@mhanc.org

Presenter: Jeffrey McQueen



**Office of
Mental Health**



**Office of Addiction
Services and Supports**

MHA Turquoise House 2

Target Population:

- Adults who need short term respite from their current home environment
- Self-referral

Respite Services Offered: (In partnership with NUMC)

- Hospital Diversion program, Using Turquoise House as a “Step Down”. (referral from inpatient)
- Direct Diversion. (referral from the ED)
- Preventative Hospitalization. (referral from J Building)
- Peer-run temporary respite care for 1 – 7 nights
- Develop goals to address current or future crises and a plan to improve life circumstances

Hours of Operation:

- 24 hours/day, 7 days/week

Contact Information: keri Butler, Program Director

- **Phone:** (516) 489-0100 Ext. 2
- **E-mail:** kbutler@mhanc.org



**Office of
Mental Health**



**Office of Addiction
Services and Supports**

Charles Evans Center Safe Harbor Program

Target Population: Adults experiencing a crisis requiring short-term respite placement

Services Offered: 7 bed transitional residence

- Up to 28 day length of stay
- Meds & treatment monitoring, ADL training

Hours of Operation: 24/7

To Make a Referral: Tanya Jackson-Edwards

- **Phone:** (516) 676-2388 x 160
- **E-mail:** edwardst@charlesevanscenter.org

Presenter: Laura La Sala



**Office of
Mental Health**



**Office of Addiction
Services and Supports**

CN Guidance: Mobile Recovery Unit

Target Population: 18 years and older with Substance Use and/or Mental Health concerns

Hours of Operation:

Monday - 8:30AM – 4:30 PM
Tuesday - 8:30AM – 7:00PM
Wednesday - 8:30AM – 4:30 PM
Thursday - 8:30AM – 7:00PM
Friday - 8:30am-4:30pm
Saturday – 9:00AM – 3:00PM

Locations: Nassau and Suffolk County

Contact Information: 516-396-2778

Presenter: Keisha Graham Wilson

Services Offered:

Medication Assisted Treatment (MAT)
Suboxone and Vivitrol inductions
Peer support services
Individual counseling
Harm reduction education
Health screening, assessment, and treatment planning
Crisis stabilization
Overdose Prevention Training
Narcan Training

Our Goal: Increase access to treatment, reduce unmet needs and reduce overdose related deaths. Our services are meant to add and expand treatment and recovery services in high need areas across Nassau & Suffolk County, helping people connect with the services they need, as they start down the road to recovery.



**Office of
Mental Health**



**Office of Addiction
Services and Supports**

Nassau County Mental Health & Specialty Clinics

Erin Rostron, LMSW

Deputy Director – Long Island Field Office
New York State Office of Mental Health (OMH)



**Office of
Mental Health**



**Office of Alcoholism and
Substance Abuse Services**

TRAININGS

Hearing Voices:

- During this simulated experience of hearing voices, participants undertake a series of tasks including social interaction in the community, a psychiatric interview, cognitive testing, and an activities group in a mock day treatment program.

safeTALK:

- A half day alertness training that prepares anyone 15 or older, regardless of prior experience or training, to become a suicide-alert helper.

Applied Suicide Intervention Skills (ASIST):

- A two-day interactive workshop in suicide first aid. ASIST teaches participants to recognize when someone may have thoughts of suicide and work with them to create a plan that will support their immediate safety.
- People can request trainings through the Suicide Prevention Coalition of Long Island's website: <http://www.preventsuicideli.org/>



**Office of
Mental Health**



**Office of Addiction
Services and Supports**

OMH Outpatient Mental Health Clinics

Charles Evans Center for Mental Health	Glen Cove	(516) 676-2388
Central Nassau Guidance & Counseling	Hicksville	(516) 822-6111
EPIC Clinic Care	East Meadow	(516) 739-7733
Hispanic Counseling Center	Hempstead	(516) 538-2613
Long Island Federally Qualified Health Center, Inc. (LIFQHC)	Roosevelt	(516) 442-5325
Long Beach Reach, Inc.	Long Beach	(516) 889-2332
Mercy Medical Center, BH Care Services	Garden City	(516) 705-3400
Nassau University Medical Center	East Meadow	(516) 572-6822
New Horizons Counseling Center	Valley Stream	(516) 569-6600
North Shore Child & Family Guidance	Roslyn Heights	(516) 626-1971
South Nassau Community Hospital	Baldwin	(516) 377-5400
South Nassau Community Hospital	Hempstead	(516) 485-5710
South Shore Child Guidance Center	Freeport	(516) 868-3030
Zucker-Hillside Hospital-Outpatient-Northwell Health	Glen Oaks	(516) 470-8100
Zucker-Hillside Child and Adolescent	Glen Oaks	(516) 470-3000



**Office of
Mental Health**



**Office of Addiction
Services and Supports**

TELE-HEALTH

- Expanded in March 2020 in response to COVID-19 and the need to implement physical distancing strategies to mitigate the impact on the health care system.
- Part 596 Telehealth Regulations.
- Not meant to replace in-person treatment. Optional Service
- April 2023 Telehealth Services Guidance for OMH Providers:
<https://omh.ny.gov/omhweb/guidance/telehealth-guidance.pdf>
- The effective date of this guidance is 5/12/2023, consistent with the end of the Federal Public Health Emergency (PHE), which ended at the end of the day on 5/11/2023.



**Office of
Mental Health**



**Office of Addiction
Services and Supports**

Community Mental Health Promotion and Support Teams (COMHPS)

- **GOAL: To support New Yorkers with subclinical mental health needs and improve community mental health and wellness.**
- Formerly known as Project Hope's Crisis Counseling Program which ended December 12, 2022.
- These teams provide community engagement, mental health wellness promotion, individual screenings for mental health conditions, brief counseling, and referral as indicated, to licensed mental health professionals.
- Two Providers in Nassau County.

Community Mental Health Promotion and Support Teams (COMHPS)- NASSAU COUNTY

Agency	Hours of Operation	Website Link	CCP Phone Number	Project Coordinator
Charles Evans Center at Glen Cove	Monday - Friday, 9 AM to 8 PM Saturdays - Calls Arranged Ahead of Time	charlesevanscenter.org	CCP - (516)273-5510 CEC MAIN LINE - (516)676-2388 - PH Option Available	Patrick Murphy padraic1916@aol.com
Hispanic Counseling Center	Monday - Friday, 9 AM - 5 PM After Hours and Weekends Arranged Ahead of Time	https://www.hispaniccounseling.org /	(516)538-2613 ext. 202	Joanna Aguirre JAguirre@hispaniccounseling.org



**Office of
Mental Health**



**Office of Addiction
Services and Supports**

988 Suicide & Crisis Lifeline

What is 988?

988 is the new three-digit number that connects people to the National Suicide Prevention Lifeline. **This service is for anyone who is:**

- suicidal
- experiencing a mental health or substance use-related crisis
- experiencing any kind of emotional distress

 **NEW YORK STATE** | Office of Mental Health





**Office of
Mental Health**



**Office of Addiction
Services and Supports**

RESOURCES

- www.omh.ny.gov
- 988 Suicide & Crisis Lifeline- 988
- Crisis Text Line: Text GOT5 to 741741
- SAMHSA Disaster Distress Helpline:: 1-800-985-5990
- National Suicide Prevention Lifeline: 1-800-273-TALK (8255)
- [Mental Health Resources During an Emergency \(ny.gov\)](https://omh.ny.gov/omhweb/guidance/covid-19-consolidated-telemental-health-guidance.pdf)
- <https://omh.ny.gov/omhweb/guidance/covid-19-consolidated-telemental-health-guidance.pdf>



**Office of
Mental Health**



**Office of Addiction
Services and Supports**

• Nassau University Medical Center J Building

- Located East Meadow NUMC campus and provides a variety of outpatient mental health services for adult, couples and families.
- Treatment for individuals through their recovery process.
- Open Access 3 days a week with appointments available for Social Work the following day.
- Social Determinants a core focus of the care we provide; support groups, on site case management, Housing referrals and addressing core barriers which interfere with the recovery process.
- **Contact Information:** Referrals: Phone: (516)-572-6822
 - **Open Access** Joanne John (516)-572-5889



**Office of
Mental Health**



**Office of Addiction
Services and Supports**

Community Liaison Specialist Psychiatric Emergency Department Inpatient Child and Adolescent Unit

Target Population: Families of children and adults experiencing a psychiatric crisis at Nassau University Medical Center

Services Offered:

- Assessment of the needs of patients and families
- Coordination with psychiatric teams regarding patient needs
- Education about Nassau County programs and services
- Referrals to programs
- Support to patients and families

Hours of Operation:

- Monday-Friday 8:30AM-4:15PM

Contact Information: Anastasia Sperounis

- **Phone:** (516) 572-4775
- **Email:** asperoun@numc.edu

Hispanic Counseling Center

Community Mental Health Promotion and Support (COMHPS)

Target Population: Youth, Young adults, Family members and Key support systems

Program Goals: Community Engagement & Mental Health Wellness Promotion

Services Offered:

- Mental health education
- Mental health support groups
- Organized recreational activities to promote wellness
- Brief informal individual, family, and group counseling
- Individual screenings for mental health issues
- Links and referrals to community resources and other qualified health professionals

Hours of Operation: Monday – Thursday 9am-8pm and Friday 9am to 4pm & weekends as needed

Contact Information: Joanna Aguirre, Program Coordinator, (516) 538-2613 x 202

All services are bilingual (English and Spanish), free, anonymous, and confidential.



**Office of
Mental Health**



**Office of Addiction
Services and Supports**

MHA Warm Line



Peer support over the phone

We rely on our lived experience and employ active listening rather than offering advice and direction

Peers throughout the state of New York utilize our Warm Line 12 hours a day

Partnership with Nassau County 227-TALK

WARM LINE FROM 9AM – 9PM

516-489-0100 EXT. 1

Presenter: Jeffrey McQueen



**Office of
Mental Health**



**Office of Addiction
Services and Supports**

MHA Financial Management Program

Target Population:

- Adults in receipt (or pending application) for monthly benefit from the Social Security Administration who are in need of a Representative Payee

Services Offered:

- Timely payment of rent, utilities and essential monthly expenses
- Budgeting assistance
- Submission of annual SSA reports, advocacy & support in maintaining proper benefit
- Financial Literacy Training and Support

Contact Information:

- Jennifer Baldwin, (516) 489-2322 ext. 1310
- Jbaldwin@mhanc.org or MHAFM@mhanc.org

Presenter: Jeffrey McQueen



**Office of
Mental Health**



**Office of Addiction
Services and Supports**

CN Guidance: CMHC

Community Mental Health Center

Target Population: Children/Adolescents:
5-17 & Adults:18 years and older with SMI,
SED and/or COD

Hours of Operation:

Monday – 9:00AM – 5:00 PM

Tuesday - 9:00AM – 5:00 PM

Wednesday - 9:00AM – 5:00 PM

Thursday - 9:00AM – 5:00 PM

Friday - 9:00AM – 5:00 PM

*Evenings and weekends as needed

Locations: Nassau and Suffolk County

Contact Information: 516-396-2776

Services Offered:

Medication Management

Peer support services

Individual counseling

Harm reduction education

Health screening, assessment, and
treatment planning

Crisis stabilization

Crisis Respite

Our Goal: Two year SAMHSA grant
focused on crisis stabilization and linkage
to ongoing resources to assist individuals
to remain out of the hospital.

Presenter: Chioma Okoro





- **Formerly known as Long Island FQHC**
- **Target Population:** Available to everyone. We accept Medicaid, Medicare, Commercial Insurance, Self-pay (access to sliding fee scale)
- **Services Offered:** Primary Care, Pediatrics, OB/GYN, Dental, Mental Health, Care Coordination, Optometry, Podiatry, STD Services, Nutrition, WIC, School Based Health, Mobile Coach
- **New Programs:**
 - *Perinatal and Infant Community Health Collaborative* NYSDOH funded program to improve health outcomes for women of childbearing age and their families. The goals of the collaborative are to improve perinatal and infant health outcomes including preterm birth, low birth weight, infant mortality and maternal mortality.
 - *Hempstead location is moving to 619 Fulton Ave in Fall 2023*
- **Locations:** Elmont, Freeport, Hempstead, Roosevelt, Oceanside, Westbury, SBHC - Freeport, Roosevelt, & Westbury High Schools
- **Hours of Operation:** Monday to Thursday 8am-8pm, Friday 8am-6pm, Saturdays 9am-1pm
- **Contact Information:** (516) 296 -3742, www.harmonyhealthcareli.org



**Office of
Mental Health**



**Office of Addiction
Services and Supports**

Nassau County Addiction Services

Brian Peterson, MBA, CASAC-Master

**Regional Coordinator
NYS-OASAS Long Island Regional Office**



**Office of
Mental Health**



**Office of Addiction
Services and Supports**

OASAS Services

- SUD Prevention
- Gambling Prevention
- Harm Reduction
- SUD Treatment
- Gambling Treatment
- Recovery Supports

Prevention

Evidence-Based Program and Practices (EBPs)

- Educational Curriculum offered to youth, parents, special populations or community members
- Environmental Strategies (provided in the community often youth led and driven)
- Early Interventions for substance users (screening tools to determine risk early)

Prevention Counseling

- Brief counseling and interventions to prevent, delay, or reduce substance use, problem gambling, and the negative consequences caused by these behaviors
- Includes screening and assessment and referral of individuals to the appropriate treatment or support services

Community Coalitions

- Engage in environmental strategies to change community-wide norms and policies
- Focus on shifting the substance use culture of a community towards healthier norms and expectations
- Long Island Prevention Resource Center: www.liprc.org

Problem Gambling Resources

- Long Island PGRC: <https://nyproblemgamblinghelp.org/long-island/>

Harm Reduction

Harm Reduction – Definition

- A set of practical strategies and ideas aimed at reducing negative consequences associated of substance use

OASAS Division of Harm Reduction

- Access to Naloxone
- Access to Fentanyl Test Strips
- Harm reduction initiatives could include
 - Investment in safety kits and resources to prevent individuals from overdosing
- Public Awareness Campaigns to prevent overdoses in public setting
- Creating and implementing a program providing medication for addiction treatment services to uninsured
- Expanding access to sterile syringes



**Office of
Mental Health**



**Office of Addiction
Services and Supports**

Overdose Prevention

<https://oasas.ny.gov/naloxone-administration-and-availability-oasas-settings>



- Access and education of Naloxone should be provided to all patients, clients and family and anyone utilizing illicit substances.
- All OASAS services should train staff, clients and significant others and provide access to the naloxone.
- Good Samaritan Law offers protection to all individuals.

https://www.health.ny.gov/diseases/aids/general/opioid_overdose_prevention/good_samaritan_law.htm



Order Naloxone/Fentanyl Test Strips
<https://oasas.ny.gov/harm-reduction>

Treatment Services

Terms you might be introduced to when seeking appropriate treatment for you or a loved one:

- Withdrawal and Stabilization Services (Detoxification)
- Inpatient Rehabilitation Programs
- Residential Treatment Programs
- Opioid Treatment Programs (OTP)
- Outpatient Rehabilitation Programs
- Outpatient Clinics
- Integrated Outpatient Programs
- Comprehensive Integrated Outpatient Programs
- Outpatient Gambling Services



**Office of
Mental Health**



**Office of Addiction
Services and Supports**

Withdrawal and Stabilization Services

Withdrawal and Stabilization Services (Detoxification): withdrawal and stabilization services manage the treatment of alcohol and/or substance withdrawal as well as acute disorders associated with alcohol and/or substance use, resulting in a referral for continued care.

Throughout the continuum of treatment, people can receive services for mild to moderate withdrawal through Medication for Addiction Treatment (MAT)



Inpatient Rehabilitation

Inpatient services provide a safe and supportive setting for individuals who have stabilized in their withdrawal symptoms but where other factors indicate the need for longer-term 24-hour, 7-day a-week care.



Residential Services

820

- OASAS-certified providers of residential programs that provide medical and clinical services, nourishing meals, limited transportation, support groups, and referrals.
- **Stabilization**
 - 24/7/365 Stabilization Element for Mild to Moderate Withdrawal
- **Rehabilitation**
 - Clinical and Behavioral services to assist with sustained recovery
- **Reintegration Services**
 - Longer term assistance with connecting to housing and additional resources for transition to community living.

819

- **Intensive Residential Services**
 - Persons unable to comply with treatment outside a 24-hour setting as evidenced by recent unsuccessful attempts at abstinence or prior treatment episodes.
- **Community Residential Services**
 - Persons who are homeless or whose living environment is not conducive to recovery and maintaining abstinence, while residents are concurrently enrolled in an outpatient chemical dependence service which provides addiction counseling.



**Office of
Mental Health**



**Office of Addiction
Services and Supports**

Residential Rehabilitation Services for Youth

These are short and long-term inpatient programs for youth with substance use and co-occurring disorders. These programs have an enhanced staffing pattern that better meets the developmental needs of adolescents. This level of care can accommodate adolescents less than 21 years of age.



Opioid Treatment Programs

Opioid Treatment Centers (OTP) are OASAS-certified sites where medication to treat opioid use disorder is administered.

- Medications can include methadone, buprenorphine, and suboxone.
- These facilities also offer counseling and educational services.
- In most cases, patients receiving services at an OTP clinic are provided treatment over a lifetime, similar to management of chronic physical ailments.

Individuals in need of Opioid Treatment can apply for services at :
Nassau County OTP: (516) 572-5801



**Office of
Mental Health**



**Office of Addiction
Services and Supports**

Outpatient Rehabilitation Service

Services designed to assist individuals with more chronic conditions, who are typically scheduled to attend the outpatient rehabilitation program three to five days per week for at least two hours per day.



Outpatient Substance Use Disorder Services

OASAS-certified outpatient services have multi-disciplinary teams which include medical staff and a physician who serves as medical director.

These programs provide treatment services to individuals who suffer from substance use disorders and their family members and/or significant others.

Specialized clinics offer services such as:

Intensive Outpatient Treatment (IOS)

Adolescents, Women, and Families



**Office of
Mental Health**



**Office of Addiction
Services and Supports**

Integrated Outpatient Services

OASAS, OMH, and DOH have partnered in the development, implementation and oversight of the “Integrated Licensure Project”. This collaboration resulted in the development of clinical and physical plant standards, staffing requirements, and a single application and review process - all with the goal to reduce the administrative burden on providers and to improve the quality of care provided to consumers with multiple needs by improving the overall coordination and accessibility of care.



**Office of
Mental Health**



**Office of Addiction
Services and Supports**

Comprehensive Integrated Outpatient Service

Comprehensive Integrated Outpatient Treatment Program has co-located OASAS Part 822 Outpatient Services and OASAS Part 822 Opioid Treatment Programs (OTP) services that are merged under one operating certificate and makes all services available to all enrolled patients (other than methadone). Both OTP and Outpatient services should be physically merged.



Outpatient Gambling Services

Individuals with problem gambling or gambling disorder respond well to evidenced-based cognitive behavioral therapy that focuses specifically on cognitions that fuel gambling behavior. In addition, treatment can involve building on skills to manage personal and environmental triggers, such as an advertisement or a memory.



**Office of
Mental Health**



**Office of Addiction
Services and Supports**

Medication for Addiction Treatment (MAT)

Research shows that combining treatment medications, where available, with behavioral therapy is the best way to ensure success for most patients. Treatment approaches must be tailored to address each patient's drug abuse patterns and drug-related medical, psychiatric, and social problems.

Integration of MAT in ALL TREATMENT SETTINGS:

- **Access to MAT:** must be offered to clients regardless of client ability or willingness to engage in psychosocial treatment.
- **Stabilization:** Patient comfort



Office of
Mental Health



Office of Addiction
Services and Supports

Recovery Support Services

Service with the mission of supporting individuals through their recovery process:

These services include:

- Regional Addiction Resource Centers
- Problem Gambling Resource Centers
- Recovery Centers
- Clubhouses for Youth and Adults
- Family Support Navigators
- Peer Engagement Specialists



**Office of
Mental Health**



**Office of Addiction
Services and Supports**

Addiction Resource Center

The Regional Addiction Resource Centers (RARC) assist people, families, and communities in accessing local resources for anyone at risk of, or experiencing, problems related to alcohol, substance use or gambling. The RARC helps identify local services and resources for prevention, treatment and recovery. The RARC can also organize community awareness events based on community requests.

A RARC can also connect you to additional supports such as Family Support Navigators, medication drop boxes, Peer Engagement Specialists, 12 step groups, Narcan/naloxone training, clubhouses and local events.

Long Island Addiction Resource Center

www.longislandaddictionresourcecenter.org

(631) 288-9505



**Office of
Mental Health**



**Office of Addiction
Services and Supports**

Problem Gambling Resource Center

Services that assist individuals who are affected by problem and pathological gambling including family members and/or significant others.

Provides:

- Group and individual counseling
- Education about
- Orientation to and opportunity to participate in problem gambling awareness and relapse prevention
- Self-help groups and family treatment.

In addition, financial counseling is provided either directly or through outside referral.

New York Council on Problem Gambling

<https://nyproblemgamblinghelp.org/long-island/>

516-226-8342



**Office of
Mental Health**



**Office of Addiction
Services and Supports**

Recovery Center

- The centers provide health, wellness and other critical supports to people and families who are recovering from a substance use disorder or are seeking recovery services for a family member or friend.
- They provide a community-based, non-clinical setting that is safe, welcoming and alcohol/drug-free for any member of the community.
- The centers promote long-term recovery through skill-building, recreation, employment readiness and the opportunity to connect with other community services and peers facing similar challenges.

Transformation, Healing, Recovery, Inspiration, Validation and Empowerment (THRIVE)

<https://www.thrivelife.org/>

(516) 765-7600



**Office of
Mental Health**



**Office of Addiction
Services and Supports**

Outreach and Engagement Services (OES)

(formerly Center of Treatment Innovation - COTI)

OES services are OASAS Treatment providers focused on engaging people in their communities by offering mobile clinical services as well linking people to other appropriate levels of care.

OES providers target un/underserved areas and expand access to telepractice, substance use treatment services, including linkage to Medication for Addiction Treatment, as well as peer outreach and engagement within the community.

CN Guidance & Counseling Services

<https://centralnassau.org/>

516-822-4060



**Office of
Mental Health**



**Office of Addiction
Services and Supports**

Youth Clubhouse

Clubhouses provide a restorative, non-clinical environment for young people whose lives have been disrupted by addiction to connect with others in recovery. Clubhouses are built on a core of peer-driven supports and services that help young people progress in their recovery, by encouraging a drug-free lifestyle.

Clubhouses for Youth cater to ages 12 to 17.

Clubhouses for Young Adults cater to ages 18 to 21.

The Living Room

(917) 596-0784



**Office of
Mental Health**



**Office of Addiction
Services and Supports**

Family Support Navigators (FSN)

- The primary goal of the Family Support Navigator is to assist families and individuals with gaining an increased understanding of the progression of addiction and how to navigate insurance and treatment systems.
- Family Support Navigators develop relationships with local substance use prevention, treatment, and recovery services; managed care organizations; area substance use disorder councils; and community stakeholders to assist families with accessing treatment and support services.

Family & Children's Association

(516) 592-7385

New Horizon Counseling Center, Inc.

(516) 872-9698

Thomas' Hope Foundation, Inc.

(631) 333-0871



**Office of
Mental Health**



**Office of Addiction
Services and Supports**

Peer Engagement Specialist Services (PES)

- The Peer Engagement Specialists use their “lived experience” to engage people on the street and in hospital emergency rooms, developing brief person-centered service plans, providing referrals and linkages to needed services.
- PES provide support, encouragement and guidance in linking persons to appropriate services.
- PES are particularly effective with people who have been reluctant to participate in traditional behavioral health services.
- PES are made available in ALL OASAS TREATMENT SETTINGS

Oceanside Counseling Center

(516) 766-6283

Thomas' Hope Foundation, Inc.

(631) 333-0871



**Office of
Mental Health**



**Office of Addiction
Services and Supports**

Access to Treatment

24/7 HOPEline: Call 1-877-8-HOPENY | Text 467369.

OASAS Certified Treatment Service Descriptions for levels of substance use disorder care.

NYS OASAS Treatment Availability Dashboard

Search For State Certified Outpatient Or Bedded Programs

Check all that apply [Help](#)

Type of Program Show only Programs with Availability Show all Programs

Gender All Male Female Transgender

Age Group Adult (Age 18 and above) Adolescent (Under age 18)

City, County or Zip Code

Within 3 Miles 5 Miles 10 Miles 25 Miles

<https://findaddictiontreatment.ny.gov/>

<https://oasas.ny.gov/>

OASAS Resources

NYS OASAS Treatment Availability Dashboard: <https://findaddictiontreatment.ny.gov/>

New York State HOPEline: 1-877-846-7369 or text HOPENY to (467369)

Community **H**ealth Access to **A**ddiction and **M**ental Healthcare **P**roject (CHAMP): Helpline: (888) 614-5400

To access the OASAS Patient Advocacy services, call 1-800-553-5790

Link to NYS OASAS: <https://oasas.ny.gov/>

Link to Talk to Prevent: <https://oasas.ny.gov/prevention/conversational-resources>

Link to Combat Heroin: <https://oasas.ny.gov/combat-addiction>

Information on Good Samaritan Law: <https://www.health.ny.gov/publications/0139.pdf>

OASAS Provider Directory: <https://webapps.oasas.ny.gov/providerDirectory/>

Contact the OASAS Long Island Regional Office: (631) 434-7263



MHA

Veteran's Opioid Prevention Program



Target Population:

- Veterans with a history of Substance Use Disorder and their families
- Self-referral

Support Services offered:

- Crisis intervention
- Referral and support to appropriate care
- Support Groups with an SUD focus
- Wellness Action Planning
- Narcan Training for Veterans and their families

Hours of Operation:

- 8am- 4:45pm

Contact Information: Brent Russell, Director of Veteran Services

- Phone: (516) 489-2322 Ext. 1312
- E-mail: brussell@mhanc.org



**Office of
Mental Health**



**Office of Addiction
Services and Supports**

Project Outreach

- Target Population: Substance Use and Mental Health
- Services Offered: Individual, Group, IOP, DBT, Medication Management, Medical Professionals program, and Impaired Drivers Program.
- Hours of Operation: Mon-Thurs 8-9 pm. Friday 8-5 pm.
- Contact Information: 516-481-2890
600 Hempstead Turnpike, West Hempstead NY 11552

Presenter: Rachel Bloom, LCSW, CASAC



**Office of
Mental Health**



**Office of Addiction
Services and Supports**

Mercy Recovery House

Target Population: Males 18 years old and up with a primary diagnosis of Substance Abuse Disorder.

Services Offered: Alcoholism and substance abuse counseling, relapse prevention and education, conflict resolution and anger management, vocational evaluation, education, training, referrals/linkages to medical care, recovery support groups, referrals to legal and financial services.

Hours of Operation: 24 hours a day, 7 days a week, 365 days a year.

Contact Information: 516-977-2050

Presenter: Jennifer O'Connell



**Office of
Mental Health**



**Office of Addiction
Services and Supports**

Mercy New Hope

Target Population: Services are for adults 18 years or older with a primary DSM-5 diagnosis of substance use disorder with or without co-occurring mental illness.

Services Offered: Stabilization services in a short-term residential setting for substance abuse. Scope of care includes medical evaluations, psychiatric evaluations, short-term therapy, medication assisted treatment, stabilization counseling, case management, discharge planning, self-help group and individual meetings.

Hours of Operation: The unit operates 24 hours a day, 7 days a week, 365 days a year.

Contact Information: 516-546-7070

Jennifer O'Connell



**Office of
Mental Health**



**Office of Addiction
Services and Supports**

Mercy Hall

Target Population: Women ages 18 and up with a primary diagnosis of Substance Abuse Disorder.

Services Offered: Services offered include Alcoholism and substance abuse counseling, relapse prevention and education, conflict resolution and anger management, vocational evaluation, education, training, referrals/linkages to medical care, recovery support groups, referrals to legal and financial services. The average length of stay ranges from 8-12 months however, this can be individualized based on circumstances and needs.

Hours of Operation: 24 hours a day, 7 days a week, 365 days a year.

Contact Information: 516-868-2244

Jennifer O'Connell



**Office of
Mental Health**



**Office of Addiction
Services and Supports**

Nassau County Opioid Treatment Program

NUMC, 2201 Hempstead Turnpike, Building
K

East Meadow, NY 11554

Presenter: Jeannine Henn,
LCSW-R

The Mission of NC Opioid Treatment Program is to treat individuals suffering from an Opiate Substance Use Disorder with a person centered, comprehensive, culturally competent bio-psycho-social approach to assist the chemically dependent persons to cease the use of illicit and/or controlled substances and move towards leading a healthy and productive life.

The Goal of this program is to utilize intensive, inter-disciplinary services and individualized treatment planning to successfully intervene with the chemically dependent client.

The Objectives include but are not limited to:

- ◆ Medical intervention with physically compromised Hepatitis C and HIV population,
- ◆ Psychiatric stabilization of those clients with dual diagnoses
- ◆ To provide medical assisted treatment and assign clients to appropriate treatment track to achieve optimal client focused outcomes
- ◆ Supply addiction specific recovery counseling.



Office of
Mental Health



Office of Addiction
Services and Supports

DIAGNOSING OPIOID USE DISORDER

The program uses the DSM-V as the standard for diagnoses of any client seeking maintenance therapy for Opioid Use Disorder

- Diagnosis depends on clusters of behaviors and physiologic effects that occur within a time frame of one (1) year:
 - A diagnosis of Severe and Moderate Use always takes precedence over Mild Use Disorder
- Specific to the client who has developed tolerance or is exhibiting withdrawal symptoms (physiologic dependence)



**Office of
Mental Health**



**Office of Addiction
Services and Supports**

Who could be considered for referral to an 822/828 Opioid Treatment Program?

Adults over the age of 18

Clients in need of medication assisted treatment to increase positive outcomes

Clients in need of longer term treatment while remaining in the community

Clients at increased risk for overdose

Clients suspected of diversion of medication/prescription

Clients struggling with the use other substances.

Clients with Co-occurring disorders in need of on-site psychiatrist care



**Office of
Mental Health**



**Office of Addiction
Services and Supports**

Program treats over 400 clients with Opiate Substance Use Disorders and is open 7 days a week. Medication for **Addiction Treatment has proven to be an effective model of care for treating opioid addiction. It improves clients' health, education, family relationships and self-esteem while also increasing clients' ability to contribute to society in a productive manner.**

Services:

- ★ Counseling
- ★ Nursing services
- ★ Psychiatric Services
- ★ Medical assessment



- ★ HIV/AIDS testing and education
- ★ Tapering program
- ★ Medical Maintenance program

- ★ Coordinate care with Court Systems, DSS, and Case Management, and Community Based Organizations

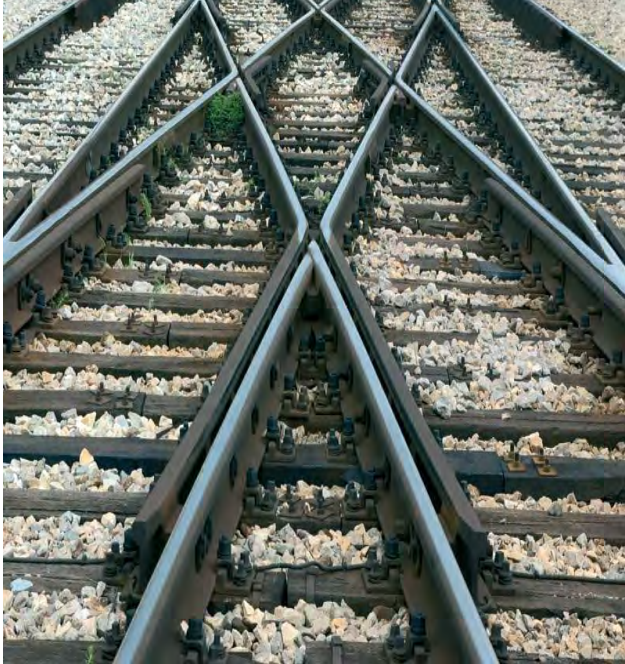


**Office of
Mental Health**



**Office of Addiction
Services and Supports**

NC OTP – TREATMENT TRACKS



Treatment Tracks Include:

- Methadone Treatment Track
- Medical Maintenance Treatment Track
- Suboxone Treatment Track (opened in 2010)
- Long Acting Naltrexone Treatment Track (opened in 2015)

*** ALL tracks adhere to OASAS 822 Regulations ***



Office of
Mental Health



Office of Addiction
Services and Supports

FCA's THRIVE Services

- Target Population:
Adults in recovery or seeking recovery services
- Services Offered:
THRIVE Recovery Center:
 - Recovery Coaching
 - Peer support groups and workshops
 - Substance free events including holiday parties, sober super bowl, dances and game nights**THRIVE Everywhere:**
 - Community-based recovery support services
 - Sober activities and events such as gardening, ice skating, running club, coffee hour, etc**THRIVE University**
 - Free trainings for working CRPAs in regard to soft skills
 - Coming soon: Free CEUs and internship program to get hours needed to get CRPA Certification
- Contact Information:
 - Ryan Kiser, Director Recovery Services
 - 516-246-0705
 - RKiser@fcali.org

Presenter: Jamie Kahn-Rapp



**Office of
Mental Health**



**Office of Addiction
Services and Supports**

FCA's Family Treatment & Recovery Center

- Target Population:
 - Adults 18+ struggling with alcohol and/or substance use disorders and/or significant others impacted by AUD and/or SUD
 - OASAS **Adolescent Endorsement** to provide treatment to 13–17-year-olds utilizing 7 Challenges EBI
- Services Offered:
 - Assessments and evaluations for alcohol and substance use issues
 - Individual, group, and significant other/family counseling (English and Spanish)
 - Care Coordination services to assist with barriers to treatment
 - Certified Recovery Peer Advocate Services
 - DWI assessments and group education
 - Vocational/Educational assessment, counseling, and referrals
 - Telepsychiatry evaluation and medication management
 - Withdrawal management for mild-moderate withdrawal symptoms
 - Medication Assisted Treatment
 - Smoking cessation
 - Food pantry available



**Office of
Mental Health**



**Office of Addiction
Services and Supports**

FCA's Family Treatment & Recovery Center

- Hours of Operation:

Hicksville location: Monday-Thursday 9am-9pm, Friday 9am-5pm,
Saturday 9am-1pm

Hempstead location: Monday-Thursday 9am-8pm, Friday 9am-5pm

- Contact Information:

Jennifer Scheck, Clinic Director, Jscheck@fcali.org

Hicksville: (516) 935-6858 x4214

Hempstead: (516) 486-7200 x5214

- Presenter: Nicolle Vasselman



**Office of
Mental Health**



**Office of Addiction
Services and Supports**

EAC Network

Established in 1969 as a small alternative educational program for adolescents in Port Washington, EAC Network has grown to become one of the premier non-profit agencies in the metropolitan region. Its mission is to respond to human needs with programs and services falling into five categories: Children & Youth Services, Family & Community Services, Senior & Nutrition Services, Vocational Services and Behavioral Health & Criminal Justice.

- New Path Treatment Center (OASAS licensed outpatient clinic)
- Health Home Care Coordination



**Office of
Mental Health**



**Office of Addiction
Services and Supports**

New Path Treatment Center

Target Population/Services Offered

The EAC Network New Path Treatment Center is an OASAS licensed substance use treatment program located in Hempstead.

- Adults aged 18 and up
- Co-occurring disorders
- Medication Management
- Medication Assisted Treatment (MAT)
- Medical Screenings/Evaluations
- Peer Support (CRPA) services
- Family Support services



**Office of
Mental Health**



**Office of Addiction
Services and Supports**

New Path Treatment Center

Target Population/Services Offered

New Path facilitates the following groups:

- Motivation to Change
- Relapse Prevention
- Moral Reconation Therapy
- Power & Control
- DWI
- Anger Management
- Coping Skills
- Parenting Skills Training
- Intensive Outpatient Program (IOP)



**Office of
Mental Health**



**Office of Addiction
Services and Supports**

New Path Treatment Center

Hours of Operation

Monday: 8:30am-8pm

Tuesday: 8:30am-8pm

Wednesday: 8:30am-8pm

Thursday: 8:30am-8pm

Friday: 8:30am-4:30pm

Saturday: 8:30am-11:30am

Contact Information

Sherri M. Flournoy, LCSWR

Program Director

New Path Treatment Center

175 Fulton Ave, Suite 403

Hempstead, NY 11550

(516) 486-3222 ext.118



**Office of
Mental Health**



**Office of Addiction
Services and Supports**

Health Home Care Coordination

Target Population/Services Offered

- Medicaid enrolled/eligible
- Two chronic health conditions (Medical, MH, SU)
- SMI or HIV/AIDS – no need for second condition
- Coordination of care between members/providers
- Health Home Plus for individuals with SMI



**Office of
Mental Health**



**Office of Addiction
Services and Supports**

Health Home Care Coordination

Hours of Operation

Monday: 8am-4pm

Tuesday: 8am-4pm

Wednesday: 8am-4pm

Thursday: 8am-4pm

Friday: 8am-4pm

Contact Information

Renee Tammaro

Program Director

175 Fulton Ave, Suite 405

Hempstead, NY 11550

(646) 355-5318



**Office of
Mental Health**



**Office of Addiction
Services and Supports**

EAC Network

Thank you!

Lisa Newman, LCSW

Senior Director of Behavioral
Health Services

Phone: (631) 648-7100 ext. 220

Cell: (631) 647-0295

Lisa.Newman@eac-network.org



**Office of
Mental Health**



**Office of Addiction
Services and Supports**



NY CARES

New York Communities Advancing Resources, Education, and Support

Community Based
SBIRT Outreach Program

SBIRT Community Outreach Program

- Target Population: All Nassau County Residents 12 and up with a special emphasize on the growing central and south American immigrant population
- Community Based SBIRT Services For all Nassau County Residents 12 and up
- Screening, Brief Intervention and Referral to Treatment.
- Referrals to other Community Based Services as needed.
- SBIRT Community Outreach Counselors available to conduct SBIRT services where the client is – i.e., schools, community events, places of worship, community centers
- Funded by SAMHSA Community Outreach SBIRT Grant : NY CARES in collaboration with NY OASAS
- Hours of Operation: Monday – Thursday 9am to 8pm
- Friday 9am to 4pm with availability outside of these hours as needed.
- Contact Information:
 - Cindy Wolff
 - cwolff@tempogroup.org
 - 516-821-2127
 - FWendy Feuer
 - WFeuer@tempogroup.org
 - 516-374-3671

Presenters: Cindy Wolff & Wendy Feuer





VICTORY

OUTPATIENT ADDICTION TREATMENT

Victory At a Glance

- **Outpatient Addiction Recovery Services**
 - Opioids (including heroin, fentanyl)
 - Alcohol
 - Other drugs (cocaine, methamphetamines)
- **Large, Clean, Professional, Welcoming Centers**
 - Nassau: Massapequa, Hicksville, Hempstead
 - Suffolk: Farmingville, Shirley
 - Coming soon: Brentwood
- **Services ALL UNDER ONE ROOF**
 - Medication Assisted Treatment
 - Psychiatric Care
 - Behavioral Health Counseling – individuals, groups, iop, peers
 - Wellness – general medical care

Case management - ensures best possible coordination of services and successful outcomes





The Victory Difference

Staffing

- **Physicians** – board certified in Addiction, Emergency Medicine
- **Psychiatrists** – board certified in Psychiatry
- **Physician Assistants** – extensive experience in substance use disorder
- **Psychiatric Nurse Practitioners** – extensive experience in substance use disorder
- **Behavioral Health Counselors** – including Licensed Clinical Social Workers, Certified Alcohol and Substance Abuse Counselors, and Peer Advocates

Scheduling

- Open 6 days a week, including evenings
- Appointments within 24-48 hours
- Call center 24/7
- All insurances accepted, including Medicaid & Medicare

97

Our Philosophy

Patients Come First, Everything Else Follows....

The patient experience matters a lot: in terms of making patients want to visit, come back again and again, and ultimately succeed in recovery

Medical Model of Addiction

Addiction is a medical condition with biological, neurological, genetic, and environmental sources of origin. As with other chronic conditions, addiction can be treated and managed.

Harm Reduction Model

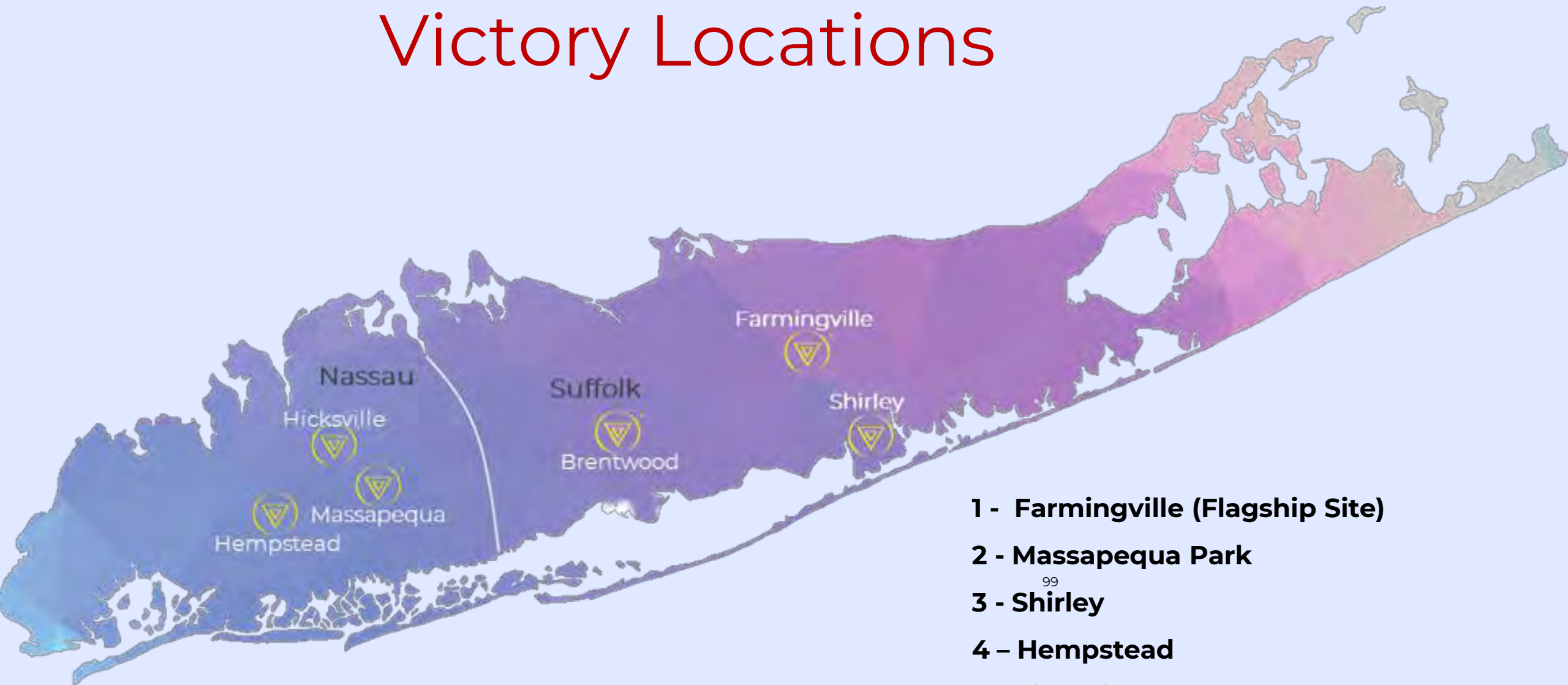
We believe in the Harm Reduction Model. It saves lives and mitigates damages associated with substance use..

Person-Centered Model

Every patient is treated as an individual. We develop customized treatment plans to help patients achieve their goals.



Victory Locations



- 1 - Farmingville (Flagship Site)**
- 2 - Massapequa Park**
- 3 - Shirley⁹⁹**
- 4 - Hempstead**
- 5 - Hicksville**
- 6 - Brentwood- coming soon!**

About Our Locations

- Clean, professional medical offices
- Fully staffed 6 days per week
 - Mon-Thurs 9a-8p
 - Fri 9a-5p
 - Sat 9a-1p
- Virtual visits available
 - Hybrid model as many patients prefer tele visit
 - Certain services must be done in person (inductions, toxicology tests)
 - Staff is generally on site
 - Dedicated telephone intake staff at each site





LONG ISLAND ADDICTION RESOURCE CENTER

The Long Island Addiction Resource Center (LIARC), promotes easy access to resources for education, prevention, treatment, recovery, and peer services related to substance use disorder and problem gambling throughout **Nassau and Suffolk Counties**.

www.LongIslandAddictionResourceCenter.org

Contact: Alana Urbont Marino, *Project Coordinator*
alana@hugsinc.org 631-288-9505



Powered by HUGS, Inc.



**Office of
Mental Health**



**Office of Addiction
Services and Supports**

Nassau County Children's Mental Health Services

**Kathryn Artesani, LMSW
Nassau County
Coordinator of Children Mental Health Services**

516-227-7049

Kathryn.Artesani@hhsnassaucountyny.us



**Office of
Mental Health**



**Office of Addiction
Services and Supports**

Children's SPOA

- **Target Population: Children ages 5 – 21**
- **Access to In-Home Services:**
 - **Non-Medicaid Care Coordination**
 - **High Fidelity Wraparound**
 - **Coordinated Children's Service Initiative (CCSI)**
 - **Clinical Care Coordination Team (CCCT)**
 - **Home Based Empowerment Support Team (Home-BEST)**
 - **Health Homes**
 - **Home and Community Based Services (HCBS)**
 - **Information about HCBS referral process through C-YES**
- **Access to Out of Home Services:**
 - **Residential Treatment Facility**
 - **Community Residence**

Presenter: Kathryn Artesani



**Office of
Mental Health**



**Office of Addiction
Services and Supports**

Children and Family Treatment and Support Services (CFTSS)

- **Target Population:** Children and Youth (under age 21) who are covered by Medicaid and have mental health and/or substance use needs
- **Assist with:**
 - Identifying mental health and/ or substance use needs early
 - Providing support in the home and community
 - Preventing the need for emergency room visits, hospital stays, or out of home placements

Presenter: Kathryn Artesani



**Office of
Mental Health**



**Office of Addiction
Services and Supports**



**Office for People With
Developmental Disabilities**

Youth Assertive Community Treatment - Youth ACT

- **Central Nassau Guidance & Counseling Services**
- **Target Population:**
 - Child must be at least 10 at the time of enrollment and may be served up to the age of 21
 - A determination of Serious Emotional Disturbance (SED)
 - Have continuous high service needs that are not being met in more traditional service settings
 - Child must reside in Nassau County
- **Services Offered:** Designed to address the significant needs of children who are at risk of entering, or are returning home from high intensity services, such as inpatient settings or residential services, using a multi-disciplinary team.
 - Licensed Therapists
 - Psychiatrist
 - Clinical Support Specialist
 - Family Peer Advocate
 - Youth Peer Advocate
 - Team Leader
 - Administrative Support
- **Contact Information:**
516-822-6111

Presenter: Kathryn Artesani



**Office of
Mental Health**



**Office of Addiction
Services and Supports**

FCA's Children's Mental Health Services

- Target Population:
 - We serve children ages 5-21 and their families in Nassau County and portions of Western Suffolk.
- Services Offered:
 - **CFTSS** – An array of services available to any child who is Medicaid eligible and identified as having a behavioral health need. Services include evaluation, therapy, counseling, family peer support and skill building
 - **Family Center Nassau** - Provide family peer advocacy and respite services to children living in Nassau County who are at risk for or have a mental health diagnosis.
 - **HCBS Waiver** - Services that are delivered in the home and community to children who are Medicaid eligible, enrolled in the Health Home Case Management program and in need of more intensive services. Services include prevocational, respite and caregiver support.
- Hours of Operation: Monday to Friday, hours are flexible to meet the needs of the families.
- Contact Information:
 - Carly Davis, LMSW, Director of Services
 - cdavis@fcali.org
 - 516-485-5976 ext: 3286

Presenter: Shari Lubeck



**Office of
Mental Health**



**Office of Addiction
Services and Supports**

FCA's Health Home Program

- Target Population:
 - Children and youth ages 5 to 21 years old who are diagnosed with a SED diagnosis (serious emotional disturbance), two chronic conditions, or complex trauma and who have active Medicaid. We serve Nassau County and portions of Western Suffolk.
 - Adults ages 21 and older who are diagnosed with two chronic conditions or serious mental illness (SMI) only
- Services Offered: linkage to services and supports/case management
- Hours of Operation: Monday to Friday, hours are flexible to meet the needs of the families.
- Contact Information:
 - Christine LaRose, LMSW, Program Director
 - clarose@fcali.org
 - 516-485-5976 ext: 3273

Presenter: Shari Lubeck



**Office of
Mental Health**



**Office of Addiction
Services and Supports**

Children's Crisis Respite

- Target Population:
 - Ages 5-17 years old
 - A child with a psychiatric diagnosis
- Services Offered:
 - Temporary/Voluntary (2-3 week) out-of-home program
 - Mental Health break for a child and their family
 - Develop and utilize healthy coping skills
- Hours of Operation
 - **Monday-Friday 9:00am-5:00pm**
 - **Crisis Respite programs: 24/7**
- Contact Information
 - Sindy Guzman
 - 516-243-2531
 - Sguzman@MHANC.org

Presenter: Kristina Milto



**Office of
Mental Health**



**Office of Alcoholism and
Substance Abuse Services**

Youth Assertive Community Treatment - Youth ACT

- **Central Nassau Guidance & Counseling Services**
- **Target Population:**
 - Child must be at least 10 at the time of enrollment and may be served up to the age of 21
 - A determination of Serious Emotional Disturbance (SED)
 - Have continuous high service needs that are not being met in more traditional service settings
 - Child must reside in Nassau County
- **Services Offered:** Designed to address the significant needs of children who are at risk of entering, or are returning home from high intensity services, such as inpatient settings or residential services, using a multi-disciplinary team.
 - Licensed Therapists
 - Psychiatrist
 - Clinical Support Specialist
 - Family Peer Advocate
 - Youth Peer Advocate
 - Team Leader
 - Administrative Support
- **Contact Information:**
516-822-6111

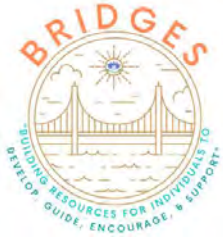
Presenter: Victoria Guercio



**Office of
Mental Health**



**Office of Addiction
Services and Supports**



BRIDGES

Building Resources for Individuals to
Develop, Guide, Encourage, and Support

A Project of YES Community Counseling Center



- Target Population: 16 - 25 year olds living with substance use issues and/or substance use and mental health issues.
- Services Offered: Screening, assessment, early intervention, short term individual and family counseling, recovery support, referral & wraparound services.
- Hours of Operation:
 - Monday - Thursday: 8:30am to 5:00pm
 - Friday: 9:00am to 2:00pm
 - Evening hours: Mondays & Tuesdays by appointment
- Contact Information:
 - bridges@yesccc.org
 - 516.719.0313 x 218
 - Grant Coordinator: Caryn Sawyer, Psy.D.
 - Youth Support Coordinator: Tonianne Ach, MSW

Presenter: Caryn Sawyer, Psy.D.



Office of
Mental Health



Office of Addiction
Services and Supports



About Us



The BRIDGES Program was developed through a grant awarded to the YES Community Counseling Center by SAMHSA.

The purpose of BRIDGES is to address the needs of those 16 to 25 who are at risk for substance misuse, addiction and co-occurring substance use and mental health disorders.

BRIDGES is a free, mobile program. We work with young adults and their families in an environment that is most comfortable to them.

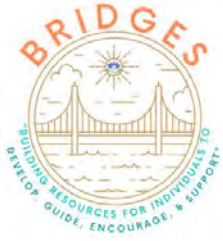
Our team consists of a licensed psychologist, licensed social workers and mental health counselors, a pediatric nurse practitioner, a registered nurse, and a direct service facilitator.



**Office of
Mental Health**



**Office of Addiction
Services and Supports**



What We Do



- Provide evidence-based screening, early intervention, short term individual and family counseling, recovery support services, medical screening and medication evaluation.
- Assess needs for treatment, referral & wraparound services.
- Provide ongoing assistance in accessing referrals and resources through established partners and community relationships.
- Assist high schools, colleges, and other organizations to develop and maintain a supportive environment for young adults.
- Offer programs in the community such as the NOT: Not On Tobacco - Teen Vaping & Smoking Cessation Group, Sober Curious group and Wellness and Recovery groups.
- Engage, support, and empower young adults and their families to overcome barriers in getting help.

Presenter: Caryn Sawyer, Psy.D.



**Office of
Mental Health**



**Office of Addiction
Services and Supports**



f @BRIDGES.YES



YES Community Counseling Center
Serving the Needs of Youth, Adults, and Families

- Group, Individual, & Family Counseling Services
- Family & Community Outreach
- Young Adult Program-BRIDGES
- Commerce Plaza-The Children's Business Center
- Training and Professional Development
- Prevention and Early Intervention Programs for elementary, middle, and high school students
- Community Coalitions
- Addition Services & Supports
- Parenting Support Groups
- Narcotics Trainings
- Youth and Family Counseling
- WISH Program Abuse and Domestic Violence Counseling

A Project of YES Community Counseling Center



Presenter: Caryn Sawyer, Psy.D.



Long Island Advocacy Center

Education Advocacy

- Target Population: Students up to age 21, including those who are involved in the child welfare system, in foster care and/or are unhoused, who seek appropriate educational services.
 - Services Offered: Educational Advocacy.
 - Hours of Operation: Monday- Friday, 9-5.
 - Contact Information:
online intake at www.theliac.org; 516-248-2222, ext.10
- Presenter: Eilleen Buckley & Mindy Turnasky



**Office of
Mental Health**



**Office of Addiction
Services and Supports**

South Shore Guidance Center

Home Based Crisis Intervention Program (HBCI)

Target Population: Nassau County child and adolescents between the ages of 5-17 at-risk of psychiatric hospitalization.

Services Offered: We provide intensive, home-based services; Stabilization of crisis, Advocacy with schools, Parent support/education, Behavior modification training, Linkage to ongoing services.

Hours of Operation: 7 days a week, Appointments scheduled at the convenience of clients.

Contact Information: (516) 868-3030

Presenter: Portia Ramsey-Cummings, Program Director (portia.ramsey@ssgcli.org)



Family Peer Support Services (FPS)

- **Target Population:**
 - Parents struggling with a child who has a significant mental/behavioral/physical health concern. ***All services are free for those who meet the eligibility criteria.***
- **Services Offered:**
 - Strengthening the family unit, building coping and communication skills to improve family cohesion, promote empowerment within the family, strengthening and building supports in the child's environment, and CSE representation.
- **Hours of Operation**
 - Monday, Friday 10-6
 - Tuesday, Wednesday, Thursday 10-9
- **Contact Information**
 - Paul Danilack, Supervisor
 - pdanilack@northshorechildguidance.org
 - 516-626-1971 ext. 303

Presenter: Paul Danilack



**Office of
Mental Health**



**Office of Addiction
Services and Supports**

Coordinated Children's Services Initiative (CCSI)

- **Target Population:**
 - Children 0-21, serious emotional disturbance (SED) diagnosis, multisystem involved.
- **Services Offered:**
 - Intensive case management; coordination of services, referrals.
 - ***All services are free for those who meet the eligibility criteria.***
- **Hours of Operation:**
 - Monday, Friday 10-6
 - Tuesday, Wednesday, Thursday 10-9
- **Contact Information**
 - Paul Danilack, Supervisor
 - pdanilack@northshorechildguidance.org
 - 516-626-1971 ext. 303

Presenter: Paul Danilack



**Office of
Mental Health**



**Office of Addiction
Services and Supports**

- **Target Population:**
 - Children ages 0-21, SED diagnosis, multi system involved, typical outpatient treatment has been unsuccessful
- **Services Offered:**
 - Individual therapy, family therapy, medication management. All services are offered in the home or preferred community location . ***All services are free for those who meet the eligibility criteria.***
- **Hours of Operation:**
 - Monday, Friday 10-6
 - Tuesday, Wednesday, Thursday 10-9
- **Contact Information:**
 - Paul Danilack, Supervisor
 - pdanilack@northshorechildguidance.org
 - 516-626-1971 ext. 303

Presenter: Paul Danilack



**Office of
Mental Health**



**Office of Addiction
Services and Supports**

Community Psychiatric Supports & Treatment (CPST)

- Target Population:
 - Children ages 0-21, Medicaid recipients, ***NO DIAGNOSIS NEEDED***
- Services Offered:
 - Intensive interventions, crisis avoidance, intermediate term crisis management, rehabilitative psychoeducation, strengths-based service planning, rehabilitative supports. ***All services are free for those who meet the eligibility criteria.***
- Hours of Operation
 - Monday, Friday 10-6
 - Tuesday, Wednesday, Thursday 10-9
 - Saturday 9-5
- Contact Information
 - Paul Danilack, Supervisor
 - pdanilack@northshorechildguidance.org
 - 516-626-1971 x. 303



Office of
Mental Health



Office of Addiction
Services and Supports

Other Licensed Practitioner (OLP)

- Target Population:
 - Children ages 0-21, Medicaid recipients, ***NO DIAGNOSIS NEEDED***
- Services Offered:
 - Individual therapy, family therapy, medication management, crisis intervention services. ***All services are free for those who meet the eligibility criteria.***
- Hours of Operation
 - Monday, Friday 10-6
 - Tuesday, Wednesday, Thursday 10-9
 - Saturday 9-5
- Contact Information
 - Paul Danilack
 - pdanilack@northshorechildguidance.org
 - 516-626-1971 ext.303

Presenter: Paul Danilack



Office of
Mental Health



Office of Addiction
Services and Supports

Children's Community Services

Available to children/young adults 21 or younger who are enrolled in Medicaid with a mental health diagnosis

Children's HCBS:

Community Habilitation: Provided in the community by staff to help the client become familiar with the community and its resources

Caregiver/Family Support: Caregivers and families can get training and education to make informed choices for children with developmental, medical, mental health, and/or substance use needs

Planned/Crisis Respite: Planned or Crisis services with the aim of staff providing support and a break for the care givers

Prevocational/Supported Employment: Assistance in building up skills for the work force, obtaining and maintaining employment

Community Self Advocacy Training and Support: Youth and their families can get help to understand developmental, medical, mental health, and/or substance use needs

CFTSS:

Psychosocial Rehabilitation (PSR): Working with staff on daily living skills, coping skills, creating a support system, learning about the community and its resources

Community Psychiatric Support and Treatment (CPST): Clinical version of PSR provided by licensed staff

Other Licensed Practitioner (OLP): Clinical services provided by a license staff including completing assessments of the clients



**Office of
Mental Health**



**Office of Addiction
Services and Supports**

Nassau County Specialty Services



**Office of
Mental Health**



**Office of Addiction
Services and Supports**

Gun Violence Prevention Initiative

Target Population: Youth ages 18-24 unemployed, not attending school servicing primarily those living in the zip code of 11801, along with the Town of Oyster Bay, Town of North Hempstead, and City of Glen Cove.

Services Offered: Individualized Career Counseling and Employment Services

Hours of Operation: Monday – Friday 9-4:45

Contact Information: Marie Calamia 516-797-4567 or by email, mcalamia@oysterbay-ny.gov



**Office of
Mental Health**



**Office of Addiction
Services and Supports**

Adult Community Services (HCBS and CORE)

Available to those 21 or older with HARP or MAP Medicaid plans and a mental health diagnosis

Adult HCBS:

Education Support: Assistance in researching, enrolling, or completing either; GED, College, or a Certification

Prevocational, Intensive Supported Employment, Ongoing Supported Employment: Assistance in learning the skills to work, to getting a job and then maintain that job

Habilitation: Working with staff on daily living skills, eating healthy, taking care of the living environment and other self care needs

CORE Services:

Psychosocial Rehabilitation (PSR): Working with staff on daily living skills, employment & education support, coping skills, creating a support system, learning about the community and its resources

Family Support and Training: Work with client and family of choice on mental health education and treatment plans

Community Psychiatric Support and Treatment (CPST): Clinical mental health services provided by a licensed staff

Peer Support: Non-clinical peer delivered services focused on community support and managing mental health symptoms

Agency Contacts: Kenny Carroll HCBS Manager: 516-493-1583 or KCarroll01@familyres.org, Herve Bleus AVP (516) 870-1600 Ext 1977 or Hbleus01@familyres.org, Eric Speciale OD (631) 868-1262 or especiale@familyres.org



**Office of
Mental Health**



**Office of Addiction
Services and Supports**

Site Based Respite

For Adults and Children with Autism and Other Developmental Disabilities

- Available to any child 6-21 years old, then adults 21 years old or older who live at home.
- To qualify you must have **OPWDD eligibility** and a care manager.
- Our goal is to help children and adults with developmental and other disabilities further expand their social skills, interpersonal skills and self-esteem in a unique recreational setting emphasizing a peer model approach. This allows the families and care takers to have a much-needed break.
- **Transportation is not provided.**
- Individuals have the opportunity to participate in activities such as; arts and crafts, sports gym, music, Wii, dance, cooking, board games and more.



Office of
Mental Health



Office of Addiction
Services and Supports

Locations:

Stony Brook- 1404 Stony Brook Rd, Stony Brook 11733

- Monday to Friday, 2pm-5pm
- Saturdays 10am-2pm
- Vacation breaks 9am-3pm

Bethpage- 191 Bethpage-Sweet Hollow Rd, Old Bethpage 11804

- Monday to Thursday, 2:30pm-5:30pm
- Saturdays 10am-2pm
- Vacation breaks 9am-3pm

Hauppauge- 120 Plant Ave, Hauppauge 11788

- Monday to Friday, 2:30pm-5:30pm
- Sundays, 10am-2pm (time varies depending on activities)



**Office of
Mental Health**



**Office of Addiction
Services and Supports**

Agency contacts:

Erin Sheehan- Day Services Manager

Cell- 516-427-0250

Office- 631-851-3803

Esheehan01@familyres.org

Herve Bleus- AVP Community services

516-870-1600 ext: 1977

Hbleus01@familyres.org

Anita Dowd- SVP Community Services

516-870-1606

adowd@familyres.org



**Office of
Mental Health**



**Office of Addiction
Services and Supports**

Long Island Advocacy Center

Benefits Advisement and Eligibility program (BASE); Non-Medicaid Service Coordination

- Target Population: People with a developmental disability.
- Services Offered: BASE provides comprehensive benefits advisement and support of OPWDD eligibility for individuals with a developmental disability. Information is provided on SSI, Medicaid, SNAP, HEAP, OPWDD services, Self Direction, ACCESS-VR and Futures planning.
NMSC: provides service coordination for individuals with developmental disabilities; supports familiejs through the OPWDD application process.
- Hours of Operation: Monday-Friday, 9-5pm.
- Contact Information: online intake at www.theliac.org; Stefanny Droz sdroz@theliac.org.

Presenter: Eilleen Buckley & Mindy Turansky



**Office of
Mental Health**



**Office of Addiction
Services and Supports**

Nassau County Behavioral Health Awareness Education and Training

**Calle Panakos
Director of Education & Training
Nassau County Behavioral Health
Awareness Training and Education**

Abstract on Mental Health Education & Training:

Mental Health education and training enhances mental health awareness allowing us to give it the same attention we give to our physical health. Furthermore, training and education highlights employees needs and helps them to foster and practice a more therapeutic approach to treatment, resulting in staff feeling more prepared and confident with the appropriate tools and resources to support our most vulnerable populations that we serve, as well as one another in the workplace.

If your organization requires a specific training or learn a specific intervention, please connect with Education and Training to discuss what your organizations specific needs are. Intelligence for that topic will then be developed specifically for your organization.



**Office of
Mental Health**



**Office of Addiction
Services and Supports**

Nassau County Narcan

- Our Narcan program is deemed ESSENTIAL
- Continue to provide VIRTUAL monthly trainings to the community
- Continue to provide in-person trainings to local agencies
- Narcan kits are available for CONTACTLESS pick up at our office after being trained
- During this unprecedented time, we have trained over 3,000 people
- **If you are interested in being trained contact:**

Calle Panakos, MSHS

- **Phone:** 516-227-7057 or 516-227-7032



Office of
Mental Health



Office of Addiction
Services and Supports

Mental Health First Aid

MHFA is an evidenced based training that teaches individuals how to identify, understand and respond to signs of mental illness and substance use disorder.

Open to any member of the community (age 18+) at no cost.



- Mental Health and Substance Use providers.
- Law Enforcements/Probation/Corrections
 - Faith-Based Communities
 - School Professionals
 - Family and Friends
 - College Students
- Mental Health First Aid courses are currently being offered in-person and virtually.

Mental Health First Aid

To schedule a Mental Health First Aid course, please contact :

Nassau County Office of Mental Health, Chemical Dependency and
Developmental Disabilities Services

Calle Panakos

Phone: 516-227-7032

Email: Calle.Panakos@hhnassaucountyny.us



**Office of
Mental Health**



**Office of Addiction
Services and Supports**

Nassau County 2023 Catalog of Available Training Courses:

1. **Narcan Training (1.5 CEU opportunity).**
2. **Events, Experiences and Effects of Acute, Chronic Complex Trauma (2 CEU opportunity).**
3. **Understanding Adolescent Mental Health (2 CEU opportunity).**
4. **Mental Health First Aid (all modules)**
 - **Adult Module**
 - **Youth Module**
 - **VET Module**
 - **Law Enforcement Module**
 - **Higher education Module**
 - **Elderly Module**
5. **Psychological First Aid 2- or 5-hour module (2 or 5 CEU opportunity).**
6. **QPR (Question, Persuade, Refer) SUICIDE PREVENTION TRAINING (2 CEU Opportunity)**
7. **The Science of De-Escalating, From Theory to Practice for Behavioral (2 CEU Opportunity)**
8. **Motivational Interviewing (MI) Evoke patient Motivation & Elicit Change Talk (2 CEU Opportunity).**
9. **Exposure Therapy, Overcoming Barriers to Fear, (2 CEU opportunity).**
- **Fire/EMS module**

