



Appendix 2.1-2

Community of Uniondale Resolutions

Adopted: April 14, 2015

Councilwoman Goosby offered the following resolution and moved its adoption as follows:

RESOLUTION REQUESTING THE U.S. CENSUS
BUREAU TO CHANGE THE CENSUS TRACT
DELINEATED AS "EAST GARDEN CITY" TO
"UNIONDALE."

WHEREAS, the Greater Uniondale Area Action Coalition has requested the Town Board of the Town of Hempstead to support a change in the designation of Census Tract 4073.01 as delineated in the 2010 census; and

WHEREAS, the 2010 Census delineates Census Tract #4073.01 as East Garden City; and

WHEREAS, the delineated tract corresponds to the Historic Mitchel Field, documented by New York State government through New York State Division of Military and Naval Affairs: Military History, to be "Mitchel Field: Uniondale, Long Island 1917-1961. A U.S. Army Air Corps base";

WHEREAS, this Board deems it to be in the public interest to agree to change the name of the census tract;

NOW, THEREFORE, BE IT

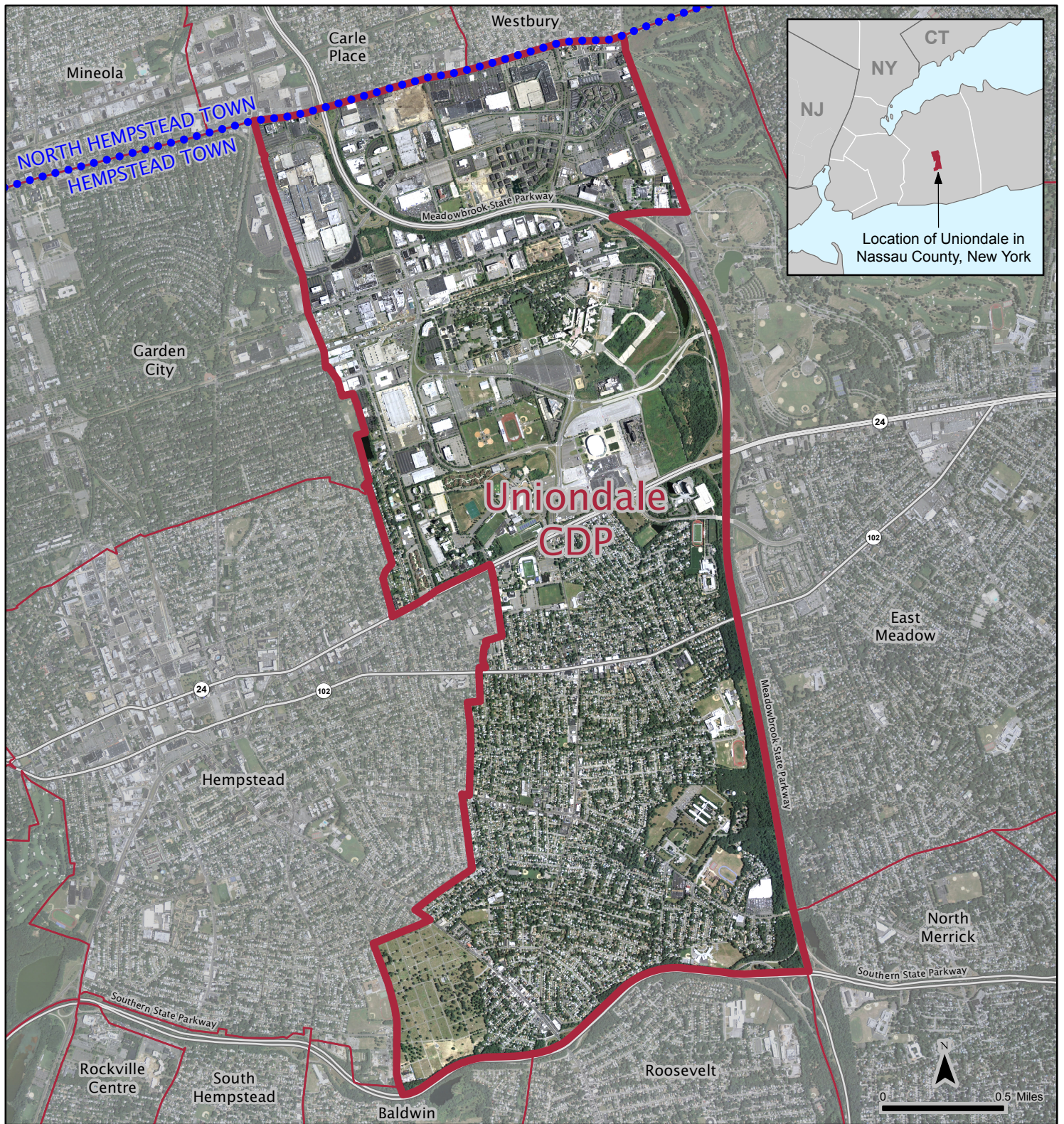
RESOLVED, that the Town Board of the Town of Hempstead formally requests the U.S. Census Bureau change the name of Census Tract 4073.01 from East Garden City to Uniondale; and BE IT FURTHER

RESOLVED, that in correspondence, statements, maps, and websites the Town of Hempstead henceforth refrains from the use of East Garden City.

The foregoing resolution was adopted upon roll call as follows:

AYES: SEVEN (7)

NOES: NONE (0)



Uniondale Census Designated Place

Map Legend

- Uniondale CDP
- Surrounding Places
- Town Boundary
- Major Road

Uniondale Census Designated Place (CDP) has been edited to reflect the community request to include the area previously designated as East Garden City CDP. This change is depicted in this unofficial draft map and will be reflected in all future official U.S. Census Bureau products and data.

The first spatial products reflecting this change are scheduled for release in August 2016. Tabular demographic data products will be available in June 2017.

Map Imagery Source: 2011 NAIP

From: [Jeff T. Behler \(CENSUS/NY FED\)](#)
To: margo.cargill@gmail.com; Max.Kramer@mail.house.gov; [Gregory M. Maney](#)
Cc: [Anthony Eremitaggio \(CENSUS/NY FED\)](#)
Subject: Uniondale CDP
Date: Thursday, October 01, 2015 7:01:22 AM
Attachments: [New Uniondale CDP 2015.pdf](#)

Please see the attached PDF depicting the new (current) boundaries for Uniondale CDP in Nassau County, New York. You can see that East Garden City CDP no longer exists.

This map may be distributed to interested partners, with the understanding that while it reflects our current boundaries, it is an unofficial document. Upcoming official product releases may still reflect the older boundaries, due to the length of time needed for our production processes.

As noted on the map, the first official spatial products with the updated boundaries are scheduled for release in the late summer of 2016, and tabular data products will be available in the summer of 2017.

Please let Anthony or I know if you need anything further at this time.

Thank you.

Jeff T. Behler
Director
New York Regional Office
U.S. Census Bureau

Office 212.584.3400
jeff.t.behler@census.gov

census.gov
Connect with us on [Social Media](#)

Nassau County Planning Commission Resolution Supporting Change of Name of Census Designated Place from East Garden City to Uniondale

WHEREAS, the Census Designated Place (CDP) known as East Garden City consists of Census Tract 4073.01 whose boundaries are as follows: the northerly boundary is Old Country Rd.; the easterly boundary is Merrick Ave. and the Meadowbrook State Parkway; the southerly boundary is NY State Route 24; the westerly boundary includes Ring Rd. West, a straight line running south to Grove St., Rhodes Ave. and Fairview Blvd. to NY State Route 24.

WHEREAS, the approximately three square mile CDP known as East Garden City falls within the Uniondale School District and the Uniondale Library District. The southerly portion of the CDP falls within the Uniondale Postal District.

WHEREAS, the Greater Uniondale Area Action Coalition requested that the Town of Hempstead support an initiative to have the United States Census Bureau change the CDP currently known as East Garden City and encompassing Census Tract 4073.01 to the Uniondale CDP as this area has historically been part of the Uniondale Community; and

WHEREAS, on April 14, 2015 the Town of Hempstead passed a resolution supporting the change of name of the CDP from East Garden City to Uniondale; and

WHEREAS, Congresswomen Kathleen Rice, representing the Uniondale community and surrounding area, has stated her support to repeal East Garden City as CDP and changing its designation to Uniondale; and

WHEREAS, the U.S. Census has requested that the NASSAU COUNTY PLANNING COMMISSION resolve to support the change in CDP designation from East Garden City to Uniondale; and

NOW, THEREFORE, BE IT

RESOLVED, that the NASSAU COUNTY PLANNING COMMISSION supports the repeal of East Garden City as CDP and changing its designation to Uniondale.

The resolution herein was, in accordance with all applicable laws, duly considered moved and adopted by the following vote:

Jeffrey Greenfield, Chair –	aye
Leonard Shapiro, Vice Chair-	aye
Jeffrey Bass -	aye
James Bianco -	aye
Ronald Ellerbe -	aye
Neal Lewis -	aye
Donna Martini -	aye
Mary McCaffery	aye

The Chair declared the resolution duly adopted.

Resolution of the NASSAU COUNTY PLANNING COMMISSION **adopted: 6/18/15**

From: [Kramer, Max](#)
To: [Kramer, Max](#)
Cc: [Hill, Summer](#); [Tierney, Zach](#)
Subject: FW: REP. RICE: Census Bureau Agrees to Re-Designate "East Garden City" as Part of Uniondale
Date: Monday, June 01, 2015 9:44:51 AM

All—

Please see the release below and the Newsday story (<http://www.newsday.com/long-island/nassau/kathleen-rice-says-census-bureau-to-do-away-with-east-garden-city-1.10488373>) about the Congresswoman's recent effort to re-designate 'East Garden City' as part of Uniondale and make the community a whole again. A great win for the community – and a real sign of how grassroots advocacy can work; this started with a great group of community activists working toward a common and righteous goal. Thanks to all involved, and, as always, let me know your thoughts.

Thanks,

Max

From: Lamb, Coleman
Sent: Friday, May 29, 2015 3:28 PM
To: Lamb, Coleman
Subject: REP. RICE: Census Bureau Agrees to Re-Designate "East Garden City" as Part of Uniondale

UNITED STATES CONGRESSWOMAN
KATHLEEN RICE
REPRESENTING NEW YORK'S 4TH DISTRICT

FOR IMMEDIATE RELEASE
May 29, 2015

CONTACT:
Coleman Lamb
Coleman.Lamb@mail.house.gov
(412) 260-7875

Rep. Rice, Local Leaders Announce that “East Garden City” will be Re-Designated as Part of Uniondale

After hearing input from community stakeholders, Census Bureau agrees to repeal divisive “East Garden City” designation



GARDEN CITY, NY – U.S. Representative Kathleen Rice announced today that the U.S. Census Bureau has agreed to re-designate “East Garden City” as part of Uniondale, after hearing overwhelming support for the re-designation from local officials and community leaders at a meeting in Rice’s Garden City District Office. The three-square mile area has historically been part of the unincorporated hamlet of Uniondale, but is currently designated in census records as “East Garden City,” which advocates have argued is unwarranted, divisive and damaging to the identity of the larger Uniondale community. Rice wrote a letter earlier this year to the Census Bureau’s New York Regional Director, Jeff Behler, requesting the meeting and expressing her opposition to the “East Garden City” designation, and the Town of Hempstead recently adopted a resolution requesting that the designation be eliminated and the area be made part of Uniondale.

“I’m proud to announce that the Census Bureau has agreed to repeal the ‘East Garden City’ designation and make Uniondale whole again,” said **Representative Kathleen Rice**. “This was a truly collaborative effort that started at the grassroots, with Uniondale residents raising their voices and refusing to allow their community to remain divided. We heard them loud and clear, and we brought all the stakeholders to the table so we could get it done. I want to thank the Census Bureau for being so responsive and cooperative throughout this process, and I want to thank all the activists, community leaders and public officials from all levels of government who worked together to make this happen.”

“While the Town of Hempstead does not have jurisdiction over changing the name of a Census Designated Place, our government has adopted a resolution requesting that the U.S. Census Bureau eliminate the ‘East Garden City’ CDP and make it part of a unified Uniondale CDP,” said **Town of Hempstead Supervisor Kate Murray**. “I cannot think of a more important quality-of-life issue than properly identifying with one’s hometown, and I thank Congresswoman Kathleen Rice for bringing this important mission to the federal level. She’s been a great partner in this endeavor.”

“The Uniondale community has fought long and hard for this and I am proud they got the victory they deserved. Uniondale is one community in both name and heart,” said **Minority Leader of the Nassau County Legislature Kevan Abrahams**.

"This is a clear example of government working for the people. I'm so glad to see our constituents come forward with a concern and fight to have their voices heard. This is a victory for them - the people of Uniondale, who are now justly unified in name once again," **said Town of Hempstead Councilwoman Dorothy Goosby.**

"Today Uniondale has been reunited in name, but I know they were always united in spirit. Congratulations to all the community and civic leaders that fought tirelessly for this," **said Nassau County Legislator Siela Bynoe.**

"The Greater Uniondale Area Action Coalition thanks Congresswoman Rice and all of our State, County, and Town representatives for taking action to make Uniondale whole. We applaud them for their leadership and responsiveness to our concerns. By filing a request to eliminate East Garden City from the 2020 Census and change it to Uniondale, they are making it crystal clear that they represent their constituents' interests first and foremost," **said Dr. Greg Maney and Jeannine Maynard, Co-Facilitators of the Greater Uniondale Area Action Coalition.**

###