

# Nassau County Wastewater Surveillance Quarter 3 Report 7/1/25-9/30/25



## Legend

Sewershed		
Atlantic Beach	Belgrave	Long Beach
Bay Park	Cedar Creek	Oyster Bay
Glen Cove	Great Neck	Port Washington

This report presents preliminary results, during this time period, intended to establish a baseline and provide context for future analysis and interpretation.

## **Summary of Activities**

### **Meetings**

During Q3, the Nassau County Department of Health (NCDOH) held two internal wastewater meetings and three wastewater meetings with Stony Brook University Center for Clean Water Technology. Highlights of the meetings with Stony Brook University include:

- Ongoing discussions of correlation analyses and epidemiologic methods, pending updated data
- Presentation of pathogen work and opioid/stimulant results.

### **Dashboard**

Nassau County is developing an internal dashboard for monitoring baseline values. Stony Brook will provide feedback.

### **Publications**

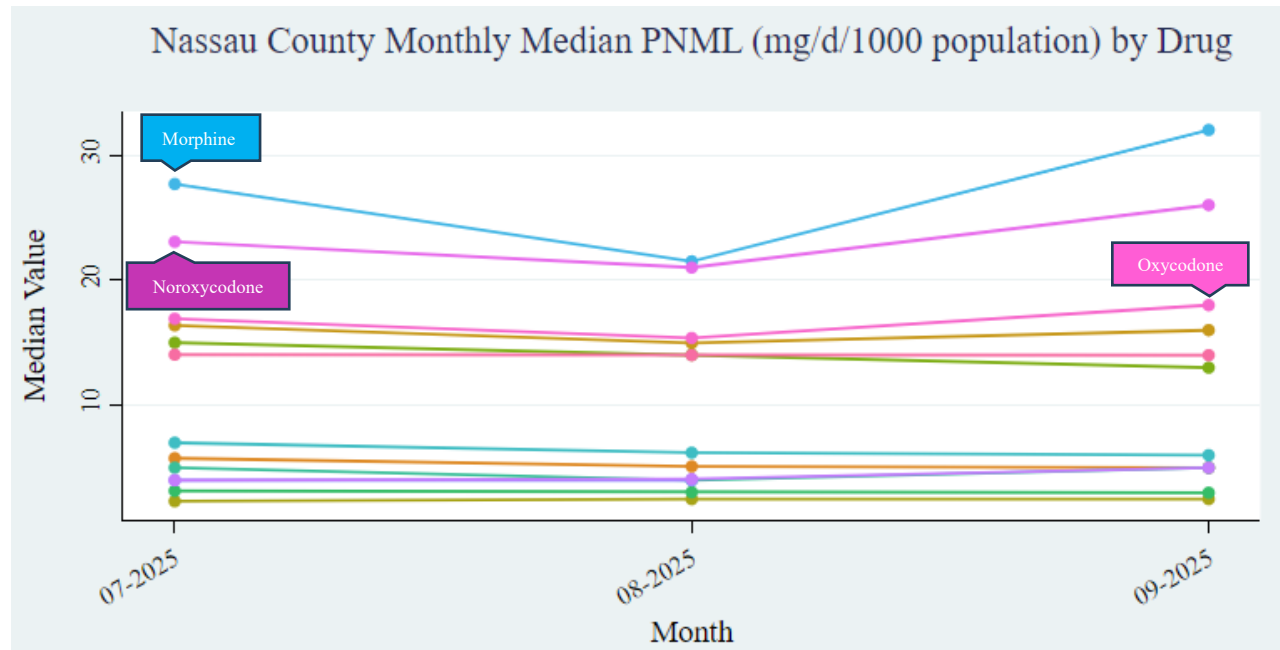
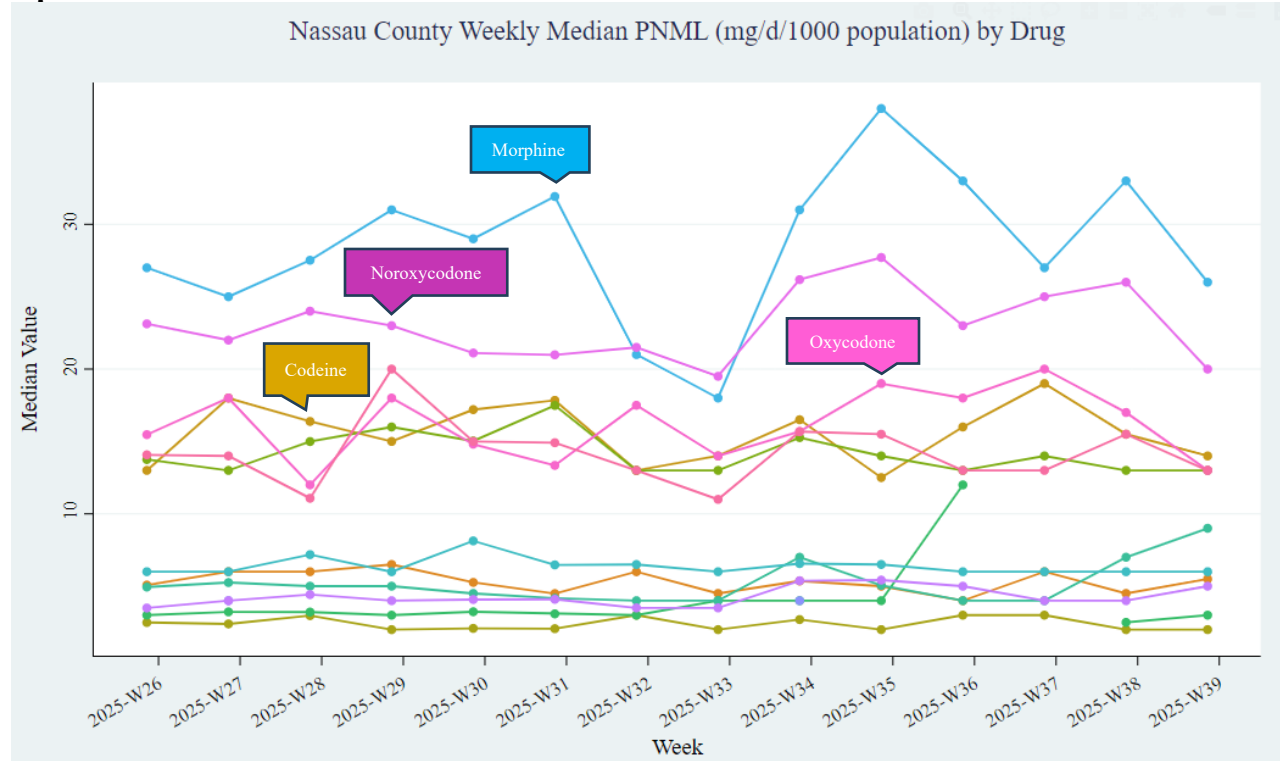
Abstract submissions and publications are pending which will describe initial laboratory and epidemiologic analyses.

### **Looking Ahead**

- Wastewater Surveillance Summit hosted by Syracuse University on October 23, 2025



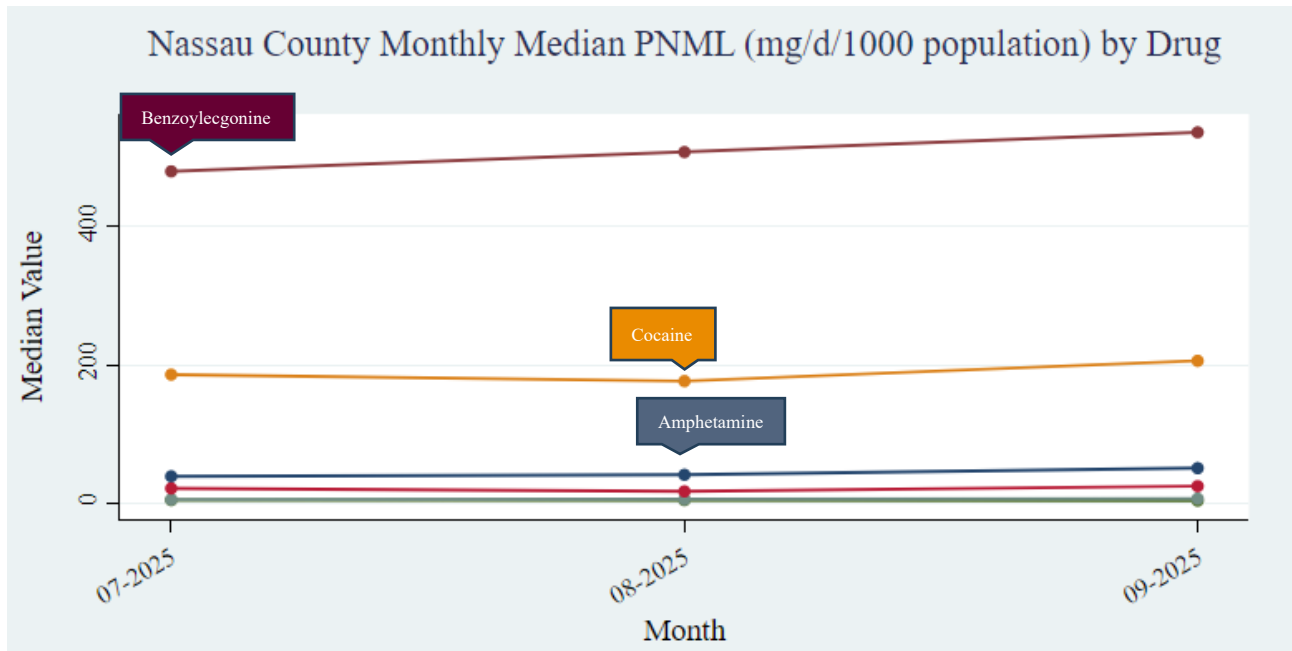
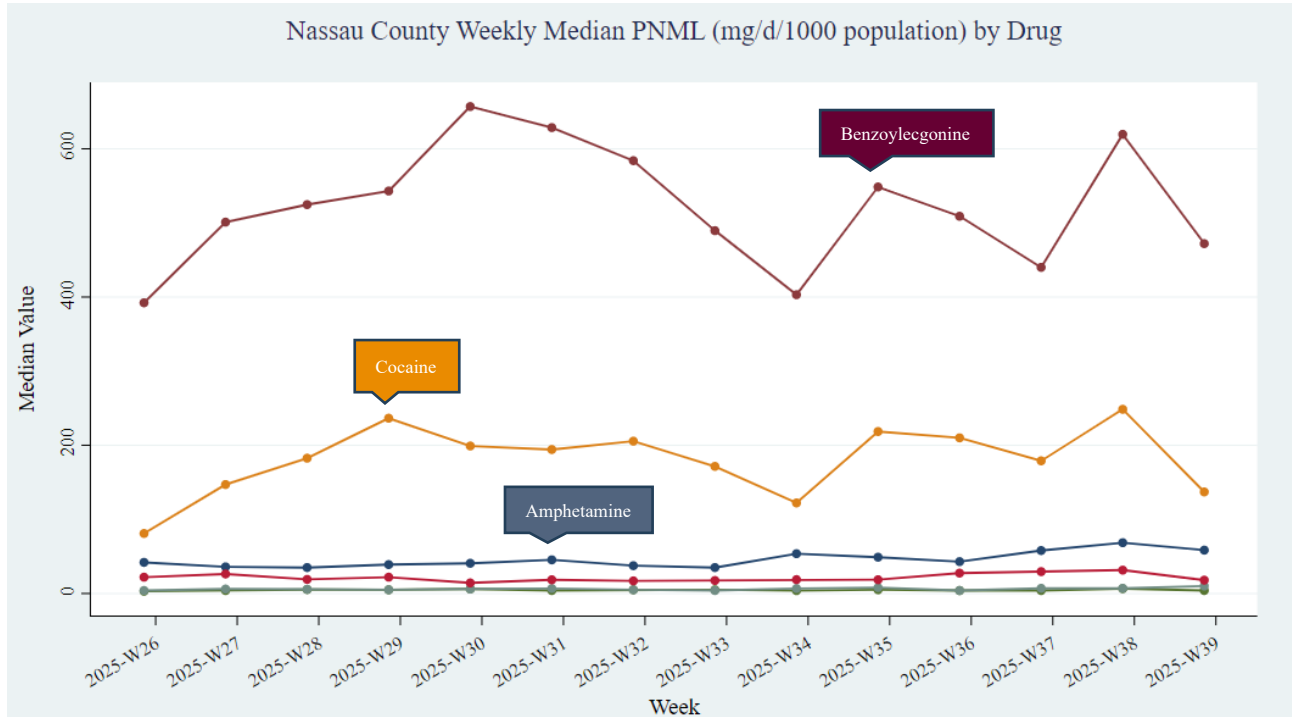
**Wastewater Analysis Visualizations**  
**Opioids:**



- drug (6-Acetylmorphine,1) (Buprenorphine,1) (Codeine,1) (Dihydrocodeine,1) (EDDP,1) (Heroin,1) (Hydrocodone,1) (Hydromorphone,1) (Methadone,1) (Morphine,1) (Norbuprenorphine,1) (Norcodeine,1) (Norfentanyl,1) (Noroxycodone,1) (Oxycodone,1) (Oxymorphone,1)



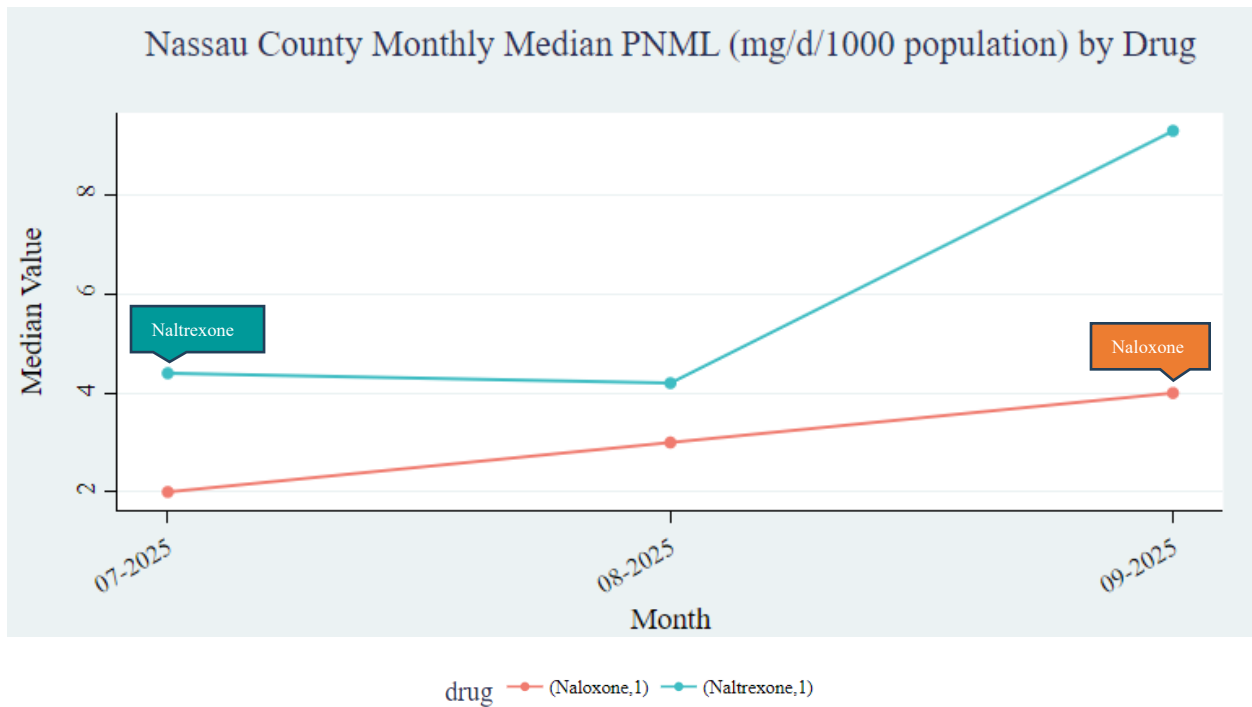
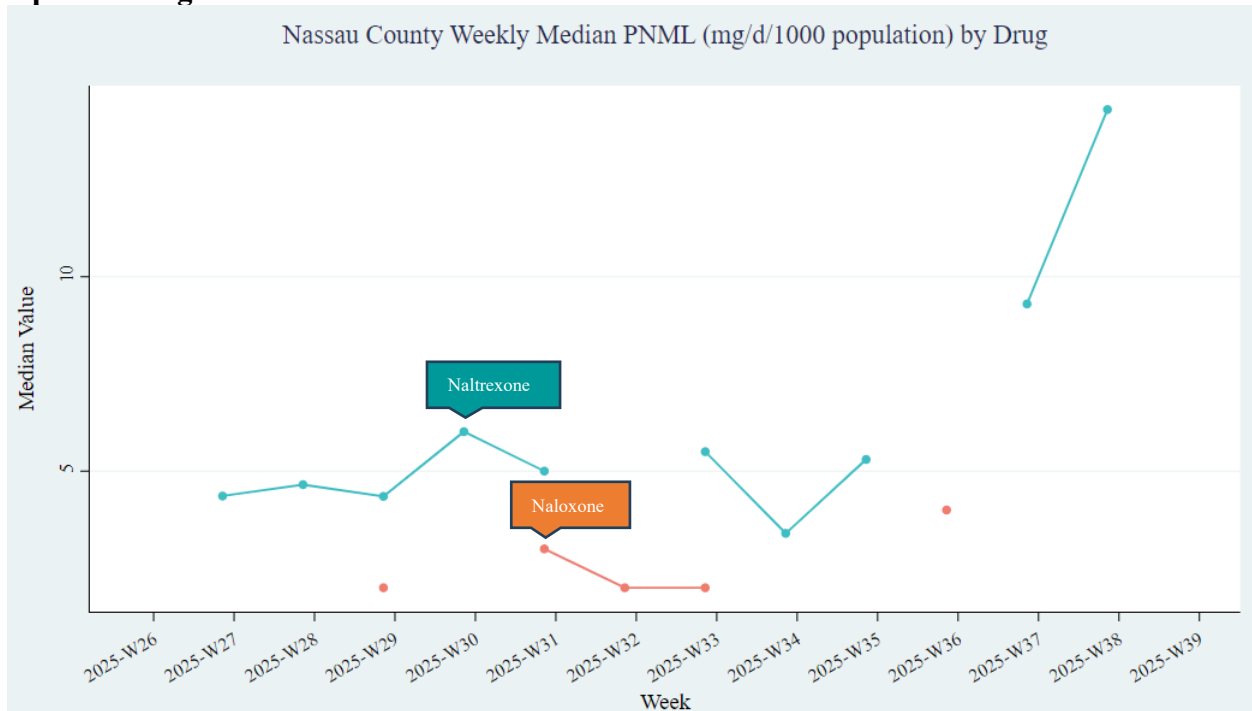
**Stimulants:**



drug — Amphetamine — Benzoyllecgonine — Cocaethylene — Cocaine — MDMA — Methamphetamine



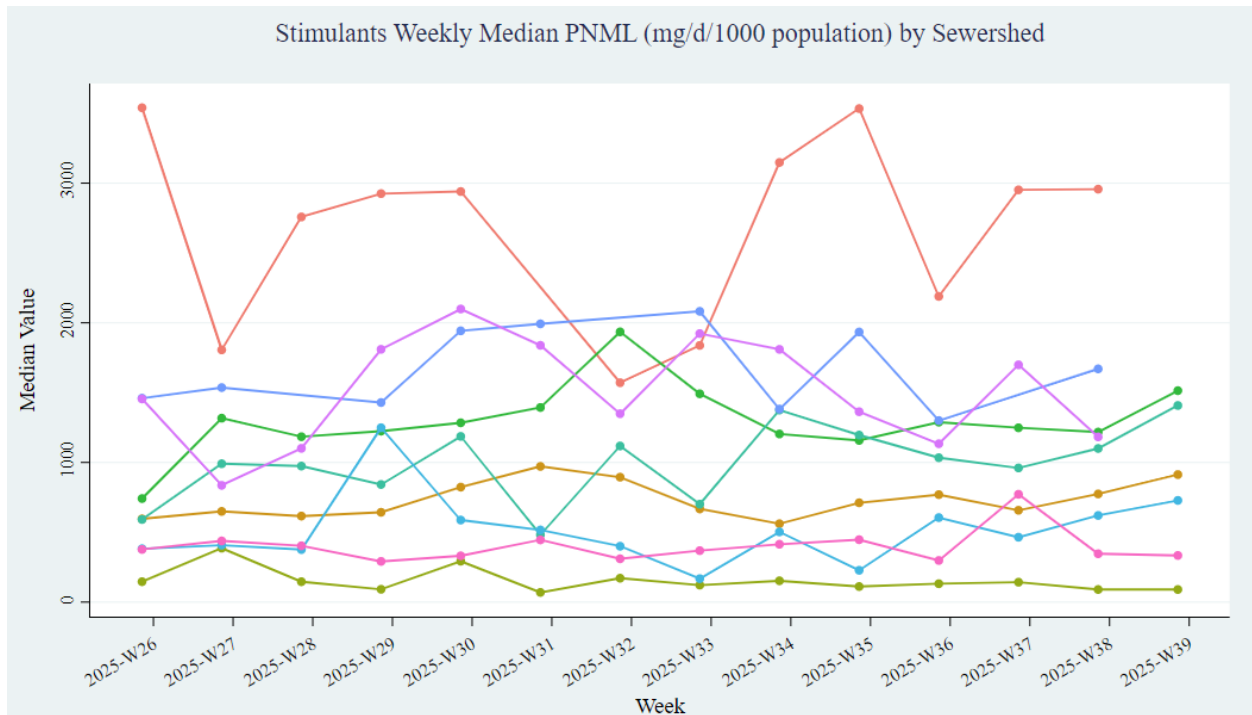
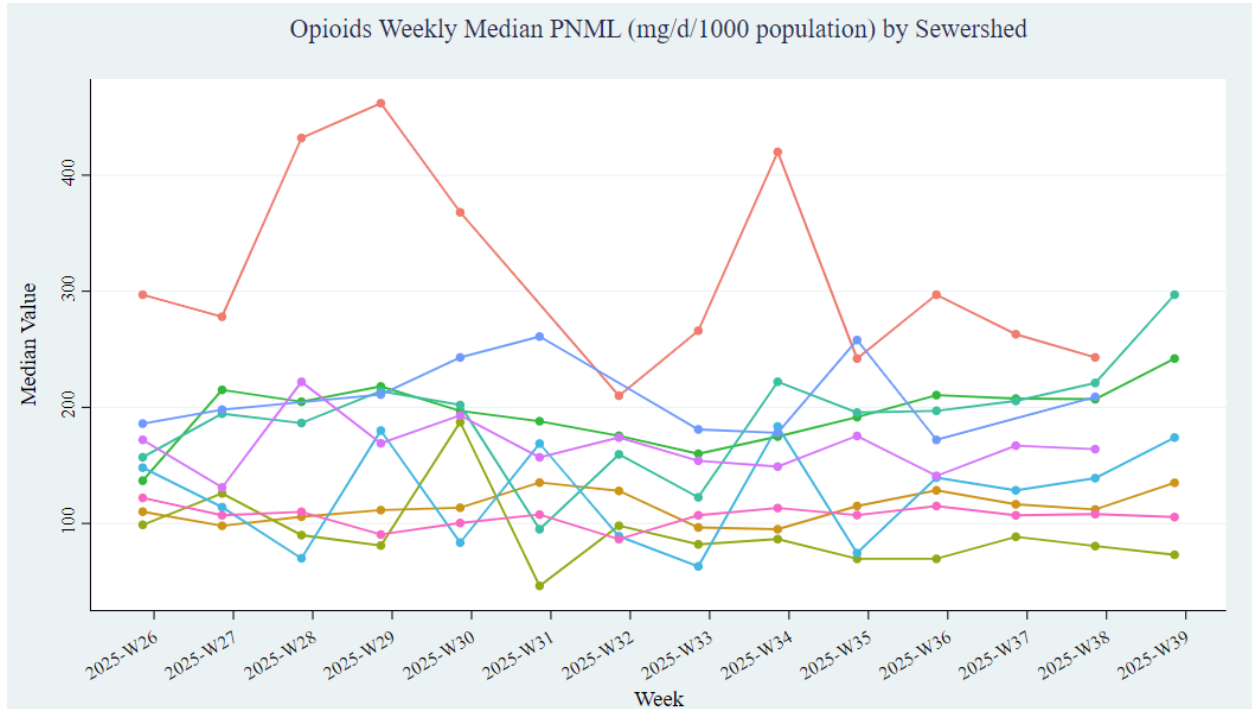
## Opioid Antagonists:



Naloxone and Naltrexone have been detected in some locations in Nassau County during the quarter, but often below the current detection limit.

## By Sewershed

\* When aggregating drugs and metabolites by class, PNML values were summed by class for that collection date, and then a weekly median was taken.



sewershed (Atlantic Beach,1) (Bay Park,1) (Belgrave,1) (Cedar Creek,1) (Glen Cove,1) (Great Neck,1) (Long Beach,1) (Oyster Bay,1) (Port Washington,1)



DISCLAIMER: The Nassau County Department of Health (NCDOH) makes every effort to post accurate and reliable information; however, it does not guarantee or warrant that the information is complete, accurate or up to date. This information is intended solely for the purpose of electronically providing the public with health-related data. The NCDOH assumes no responsibility for any error, omission, or other discrepancies between electronic and/or printed versions of this information. Nassau County and its officers, employees, and/or agents shall not be liable for damages or losses of any kind, including but not limited to direct, indirect, incidental, consequential, special or exemplary damages arising out of, or in connection with, the use or performance of such information, nor damages or losses caused by reliance upon the accuracy of any such information and/or damages incurred from the viewing, distributing, or copying of such materials.

