



BRUCE A. BLAKEMAN
NASSAU COUNTY EXECUTIVE



MONTHLY NEWSLETTER

August 2025

What's Inside

Cover StoryPage 1

RACES.....Page 5

Scheduled Events & Training.....Page 6

Nassau County News & Weather.....Page 8

Calendar of Events.....Page 9



**COUNTY, STATE
&
FEDERAL
ONE TEAM**

HURRICANE PREPAREDNESS: A Guide for Nassau County CERT and Community Members

Why Hurricane Preparedness Matters

Hurricanes are among the most destructive natural disasters—and while Nassau County is not in the tropics, our coastal location puts us directly in the path of potential Atlantic hurricanes and powerful post-tropical storms. In recent years, events like Hurricane Sandy have demonstrated the devastating effects hurricanes can have on Long Island communities.

As Community Emergency Response Team (CERT) members, it is our duty to stay prepared and educate others. The Atlantic hurricane season runs from **June 1 through November 30**, with the most active period for our region typically falling between August and October.

This article is designed to help both CERT volunteers and residents of Nassau County understand the risks, prepare effectively, and respond with resilience before, during, and after a hurricane.

Understanding the Threat: Hurricanes and Long Island

Hurricanes that affect Long Island often arrive as Category 1 or 2 storms—but even lower-category hurricanes or tropical storms can bring:

- Storm surge and coastal flooding
- High winds (75+ mph)
- Power outages lasting days or weeks
- Fallen trees, blocked roads, and impassable neighborhoods
- Severe property damage from flying debris and floodwaters

Communities like Long Beach, Atlantic Beach, Freeport, Massapequa, and the South Shore barrier islands are especially vulnerable to storm surge, while inland flooding can affect neighborhoods far from the coastline. Continued on next page

Preparedness Starts at Home

Create a Family Emergency Plan

Every household should have a plan that includes:

- Evacuation routes and shelter locations
- Communication plans (how to stay in touch if separated)
- Emergency contact cards for all family members
- Special considerations for pets, elderly family members, or those with medical needs

Build a Go-Kit (72-Hour Emergency Kit)

Each household should have a disaster kit that includes:

- 1 gallon of water per person per day (for 3–7 days)
- Non-perishable food and manual can opener
- Flashlights and batteries
- NOAA weather radio
- First aid kit and essential medications
- Cell phone chargers (including power banks or solar)
- Important documents in a waterproof bag
- Cash in small denominations
- Dust masks and plastic sheeting
- Extra clothes, blankets, and hygiene items
- Whistle to signal for help

Evacuation Preparedness

Nassau County has designated coastal storm evacuation routes and zones. Residents should know:

- Their evacuation zone (Zone 1 is closest to water; Zone 4 is farther inland)
- The nearest evacuation routes, such as the Meadowbrook Parkway, Wantagh Parkway, or Southern State Parkway
- Local Red Cross shelters, pet-friendly shelters, and options for those with medical or functional needs

CERT members may be called upon to assist with:

- Traffic and crowd control
- Shelter support
- Distribution of information
- Checking on at-risk neighbors

For evacuation information, Nassau County OEM maintains the “Know Your Zone” website and a public alert system: www.nassaucountyny.gov/OEM

Harden Your Home Before the Storm

Encourage residents to:

- Bring in loose outdoor items (furniture, decorations, garbage cans)
- Secure windows with plywood or hurricane shutters
- Anchor propane tanks and secure sheds
- Trim trees and branches near power lines and rooftops
- Fill gas tanks and charge all electronics
- Move important items to higher ground if flooding is likely
- Place sandbags in front of low entryways or garage door

Power and Communication Considerations

Long outages are common after hurricanes. Encourage neighbors to:

- Store extra fuel safely if using a generator
- Never run generators indoors or in garages—CO poisoning is deadly
- Have backup batteries or crank-powered chargers
- Sign up for Emergency Alerts (<https://www.nassaucountyny.gov/2920/Emergency-Notification-Sign-Up>) to receive official emergency notifications
- Keep a printed list of emergency numbers

CERT-Specific Preparation Tips

As a CERT volunteer:

- Maintain a CERT Go-Bag with personal protective equipment, ID, vest, radio, and reference materials
- Coordinate with your team leader for deployment updates
- Stay informed with NOAA alerts, OEM communications, and the CERT call-down system
- Know how to access local shelters, staging areas, and supply distribution points

In major events, CERT teams may assist in:

- Neighborhood damage assessments
- Staffing shelters or warming/cooling centers
- Door-to-door wellness checks
- Volunteer coordination
- Debris clearance (non-structural)
- Public information support

After the Storm

Once the storm passes, the danger isn't over.

Common hazards include:

- Downed power lines
- Gas leaks
- Contaminated floodwater
- Structural instability
- Hidden debris under murky water

Recovery Steps:

- Check on neighbors, especially seniors and those with limited mobility
- Photograph property damage for insurance
- Only return home when officials say it is safe
- Use caution when entering damaged buildings

CERT teams may be tasked with:

- Initial damage assessment surveys
- Staffing disaster recovery centers
- Language support for non-English speakers
- Distributing recovery information

Community Preparedness Is Everyone's Responsibility

As a CERT member, you're not only protecting yourself and your household—you're a multiplier. You're setting the tone for your street, your neighborhood, and your community. Hosting hurricane preparedness outreach events, sharing flyers, giving social media tips, and being visible in times of uncertainty make a big impact.

Every household better prepared is one less household in need during an emergency.

Hurricanes are not just coastal problems—they affect entire communities across Nassau County. With strong planning, the right equipment, and a coordinated community response, we can reduce risk, save lives, and recover faster.

Let's continue to train, prepare, and support one another—before the next storm strikes.

<https://www.nassaucountyny.gov/1634/Hurricane-Preparedness>

Follow above link for hurricane preparedness information, including important phone numbers and the latest Hurricane/Coastal Storm Awareness Brochure

5 THINGS TO KNOW ABOUT HAVING AN EVACUATION PLAN









1

Find out today if you live in a hurricane evacuation zone.



2

Plan today where you would go and how you would get there if told to evacuate by local officials.



3

If you don't live in an evacuation zone, identify someone who does, and plan to be their inland evacuation destination.



4

Leave immediately when told to evacuate by local officials.



5

Identify an evacuation destination that will accommodate your pets, as most shelters do not permit them.





For more Hurricane Safety Information, visit [weather.gov/hurricanesafety](https://www.weather.gov/hurricanesafety)

OEM | Nassau County, NY - Official Website
Click above and follow to Know Your Zone to see if you live in a flood zone.



Radio Amateur Civil Emergency Services (RACES)



The RACES / CERT Communications meeting was held on Thursday July 10th on Zoom. Jim Mezey / W2KFV ARRL Section Manager NYC/LI gave report on the ARRL Field Day events. All in all it went well. We look forward to Field Day 2026.

Reminder, If you are planning to attend the AUX Comm Training in the fall. You must complete ICS 100, 200, 700 and 800 prior to attending the training. All these courses are on line at <https://training.fema.gov/is/courseoverview.aspx?code=IS-100.c&lang=en> Once completed print out the course completion certificate as proof of completion. You will also need a letter of approval from OEM to attend. This training is conducted on three consecutive weekdays. You do not need an Amateur Radio License to attend.

The after meeting train was on Decision Making. The tragic events in Texas made this training very timely. There was a very informative discussing following the training.

Silent Key:

It is with great sadness we announce the passing of RACES' Chief Radio Officer Robert W. Long, KC2PSN. Bob was an integral part of both CERT and RACES. He was also a member of the Amateur Relay Radio League (ARRL) and Amateur Radio Emergency Services (ARES). His volunteerism was unmatched. If there was an event where Amateur Radio Operators were needed you knew you would find Bob there. He truly enjoyed the hobby.

At our September RACES / CERT Communications meeting we will suspend training so that we can have a time to remember Bob and share stories. Coffee and light refreshments will be served.

Events:

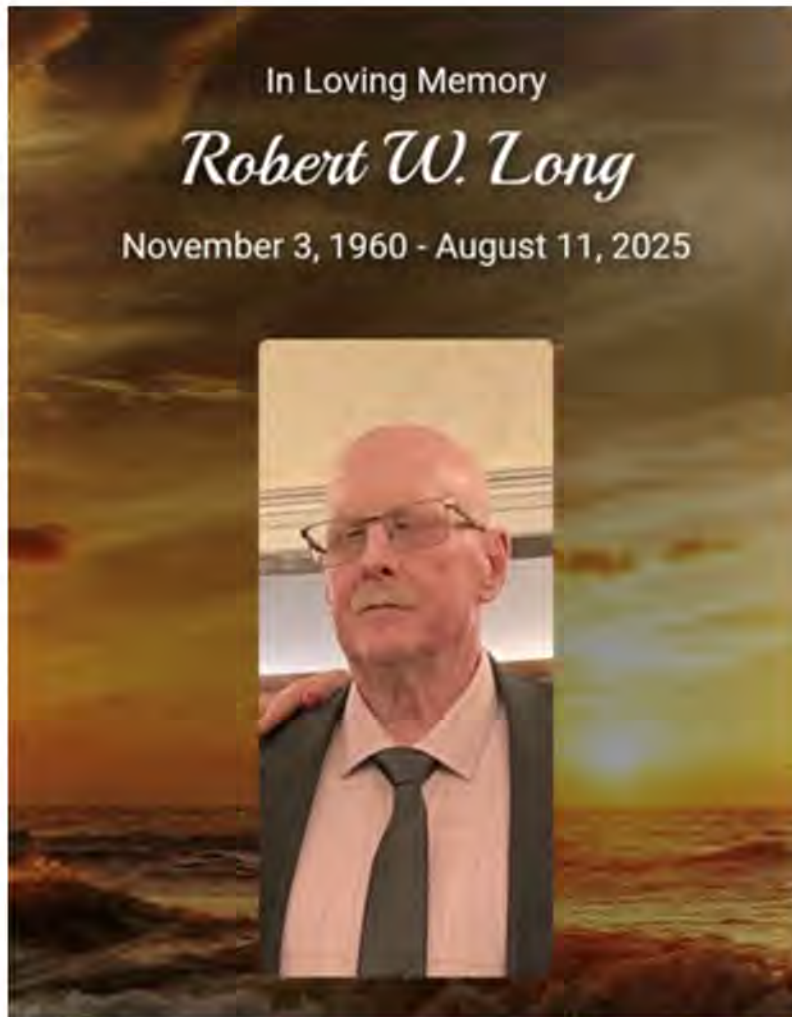
Here is a listing of events in the metro area that you maybe interested in attending as communicators. We can connect you with the sponsoring agency by emailing us at nassaucountyny.races@gmail.com

2025 Events

- Saturday, August 16th -17th Fire Island Lighthouse
- Sunday, September 7th Babylon Village Fair
- Sunday, October 19th ACS Walk at Jones Beach
- Sunday, October 19th Suffolk County Marathon
- Sunday, November 2nd TCS New York City Marathon



If you SEE Something SAY Something

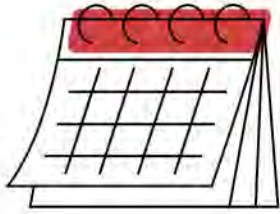


In Memory of Bob Long

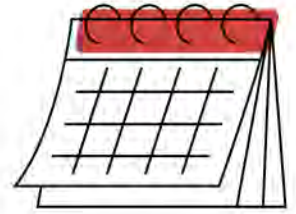
It is with deep sadness that we share the passing of Bob Long KC2PSN, Chief Radio Officer of RACES and a dedicated member of both RACES and our CERT program. Bob was not only an exceptional radio operator but also a passionate educator who generously volunteered his time to assist with our CERT Basic Training classes, helping to inspire and instruct countless volunteers over the years. His unwavering commitment to emergency preparedness and public service set a shining example for us all. On behalf of the Nassau County Office of Emergency Management and myself as the CERT Coordinator, we extend our sincere condolences to Bob's family, friends, and fellow volunteers. His contributions to our community will never be forgotten.

Respectfully,
Richard J. DeLucia
CERT Coordinator





Planned Events & Trainings



FEMA offers a large variety of online courses that are free of charge and will help to further your preparedness education. If you do not have a FEMA ID, you can register for one here.
[:https://cdp.dhs.gov/femasid](https://cdp.dhs.gov/femasid)



Emergency Management Institute - Independent Study (IS) | Course List

FEMA Emergency Management Institute (EMI)
Independent Study Course List

fema.gov

IS-100.C: Introduction to the Incident Command System, ICS 100

<https://training.fema.gov/is/courseoverview.aspx?code=IS-100.c&lang=en>

IS-317.A: Introduction to Community Emergency Response Team (CERTs)

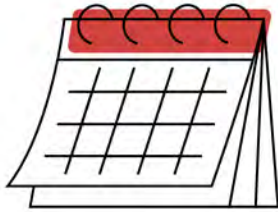
As a pre-requisite for CERT Basic classroom training or just to learn more about the program, check out EMI's Independent Study (IS) course IS-317.A.

<https://training.fema.gov/is/courseoverview.aspx?code=IS-317.a&lang=en>

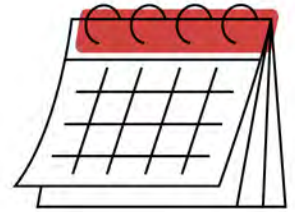
IS-315.A: CERT and the Incident Command System (ICS)

IS-315.A educates CERT program managers, trainers, or emergency responders on CERT's relationship to the Incident Command System (ICS) and potential roles CERTs play in a disaster or emergency situation.

<https://training.fema.gov/is/courseoverview.aspx?code=IS-315.a&lang=en>



Planned Events & Trainings



To register for Narcan training visit:
<https://toh311.net/Narcan-signup/#/>



BRUCE A. BLAKEMAN
NASSAU COUNTY EXECUTIVE

Text to 911 NOW LIVE

Response just as quick as a 911 call!



Mande un Texto al 911 ¡YA DISPONIBLE!

Response just as quick as a 911 call!

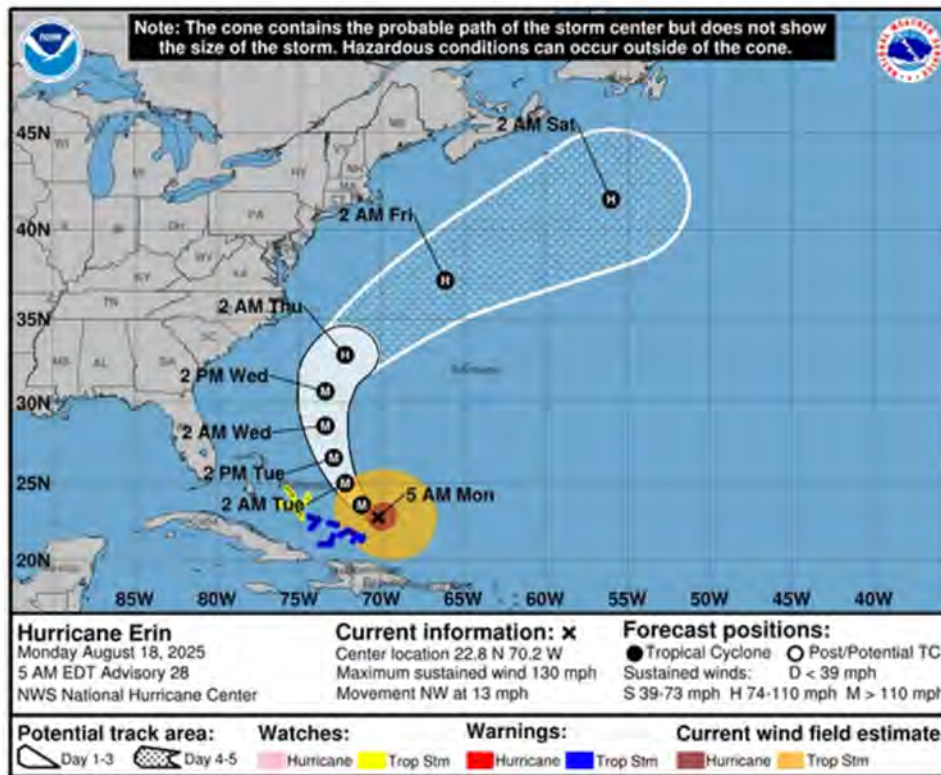




Nassau County



Weather, News & Events



Hurricane Erin, the first of the 2025 Atlantic hurricane season, rapidly strengthened into a major Category 5 storm on Saturday, the National Hurricane Center said. On Sunday, it weakened into a Category 3 storm, before returning to a Category 4.

While Erin's track is forecast to stay offshore, the New York City area and the Jersey Shore may feel its effects as it moves along the East Coast over the coming days.

Please send in any photos you have taken of news worthy items or from any CERT events that you have attended and I will select some to be used in the newsletter. Send images to:
rdelucia@nassaucountyny.gov

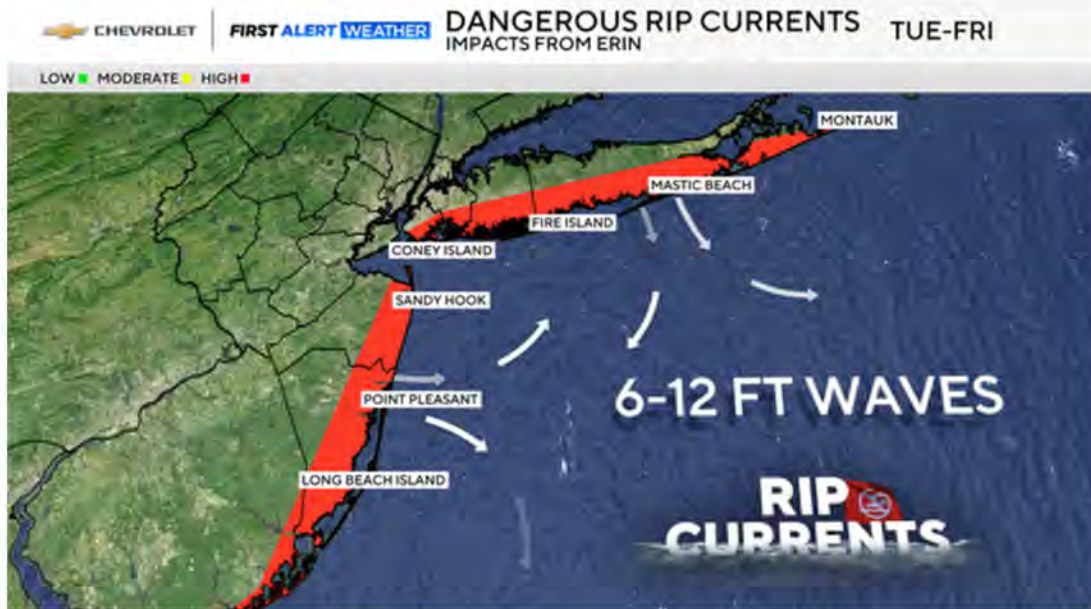


Nassau County



Weather, News & Events

Dangerous rip currents down the Shore



The storm is expected to bring dangerous rip currents along the Jersey Shore Monday and Tuesday, as well as south facing New York beaches on Tuesday.

Beach goers should not go swimming, regardless of skill level. Only go into the water to get your feet wet. Beach conditions will continue to deteriorate this week as Hurricane Erin approaches.

Hurricane Erin's potential impact on Tri-State Area

As Erin moves away from the Caribbean Islands, it will turn north, sandwiching between Bermuda and coastal U.S. states by the middle of next week. The jet stream will ultimately push it away from the coastline, but also lead to an expansion in size.

Erin's effects will likely be felt in the Tri-State Area Tuesday through Thursday, mainly along the Jersey Shore and Long Island's South Shore.

The storm will be several hundred miles away, however.

Coastal areas, including New York City beaches, will see dangerous rip currents, along with high surf, waves that could reach 12 feet, flooding, beach erosion and wind gusts between 20-40 mph.



Nassau County



Weather, News & Events

To escape a rip current, stay calm, float, and swim parallel to the shore until you are out of the current's pull, then swim back to shore at an angle. Avoid swimming directly against the current, as it can lead to exhaustion.



Here's a more detailed breakdown:

1. Stay Calm and Float: Rip currents don't pull you under, they pull you away from the shore. Panic can lead to exhaustion, so staying calm is crucial. Float on your back to conserve energy and assess the situation.
2. Swim Parallel to the Shore: Rip currents are typically narrow, so swimming parallel to the shoreline (along the beach) can help you escape the current's pull. Most rip currents are less than 80 feet wide, according to PBS North Carolina.
3. Swim at an Angle Back to Shore: Once you've cleared the rip current, you can swim at an angle back to the beach.
4. Get Help if Needed: If you are unable to swim out of the current, raise your arm and yell for help.

Key points to remember:

- Don't panic: Rip currents are powerful, but they are not a death sentence.
- Don't fight the current: Swimming against it will only tire you out.
- Stay afloat: If you can't swim, float until help arrives.
- Seek help: If you are in distress, wave your arms and yell for assistance.



Calendar of Events

August

S	M	T	W	T	F	S
1	2	3	4	5	6	7
8	9	10	11	12	13	14
15	16	17	18	19	20	21
22	23	24	25	26	27	28
29	30	1	2	3	4	5

September

S	M	T	W	T	F	S
	1	2	3 ^{Div} 1	4	5	6
7	8	9	10	11	12	13
14	15 ^{Div} 2	16	17	18	19	20
21	22	23	24	25	26	27
28	29	30				



CERT Division Meetings



CERT Events



RACES Meetings



**All County Meetings
(Div1, Div2 & RACES)**

Upcoming Meetings

CERT Division 1 Meeting -

Date: Wednesday September 3, 2025

Time: 7:00pm

Location: 510 Grumman Rd. Lecture Hall

CERT Division 2 Meeting - Date: Monday September 15, 2025

Time: 7:00pm

Location: 145 Averill Boulevard, Franklin Square



NASSAU COUNTY CERT COORDINATOR

**RICK DELUCIA
OEMCERT@NASSAUCOUNTYNY.GOV**

DIVISION 1

**DIVISION SUPERVISOR
BILL PAVONE
NASSAUCERTDIV1@YAHOO.COM**

DIVISION 2

**DIVISION SUPERVISOR
MARVIN STEIN
CERTDIV2NASSAU@GMAIL.COM**

KNOW YOUR ZONE



Scan this code or click here
to see flood zone map.

EMERGENCY ALERTS



Scan this code or click here
to sign up for Emergency Alerts.

FOLLOW US ON SOCIAL MEDIA



Nassau County OEM



@nassaucountyoem



@nassaucountyoem