

Nassau County Wastewater Surveillance Quarter 4 Report 10/1/25-12/31/25



Legend

Sewershed		
Atlantic Beach	Belgrave	Long Beach
Bay Park	Cedar Creek	Oyster Bay
Great Neck	Glen Cove	Port Washington

This report presents preliminary results, during this time period, intended to establish a baseline and provide context for future analysis and interpretation.

Summary of Activities

Meetings

During Q4, the Nassau County Department of Health (NCDOH) held two internal wastewater meetings and two wastewater meetings with Stony Brook University Center for Clean Water Technology. Highlights of the meetings with Stony Brook University include:

- Presentation of 7 months of WBE data and sharing of draft manuscript
- Discussion on standardized methodology
- Presentation of initial analyses between hospitalization data and WBE data.
- Presentation of initial analyses between motor vehicle crash data and WBE data.
- Presentation of pathogen work and opioid/stimulant results.

Wastewater Surveillance Summit

NCDOH virtually attended the Wastewater Surveillance Summit hosted by Syracuse University on October 23, 2025.

Dashboard

Nassau County is developing an internal dashboard for monitoring baseline values. Stony Brook University will provide feedback.

Publications

Abstract submissions and publications are pending which will describe initial laboratory and epidemiologic analyses.

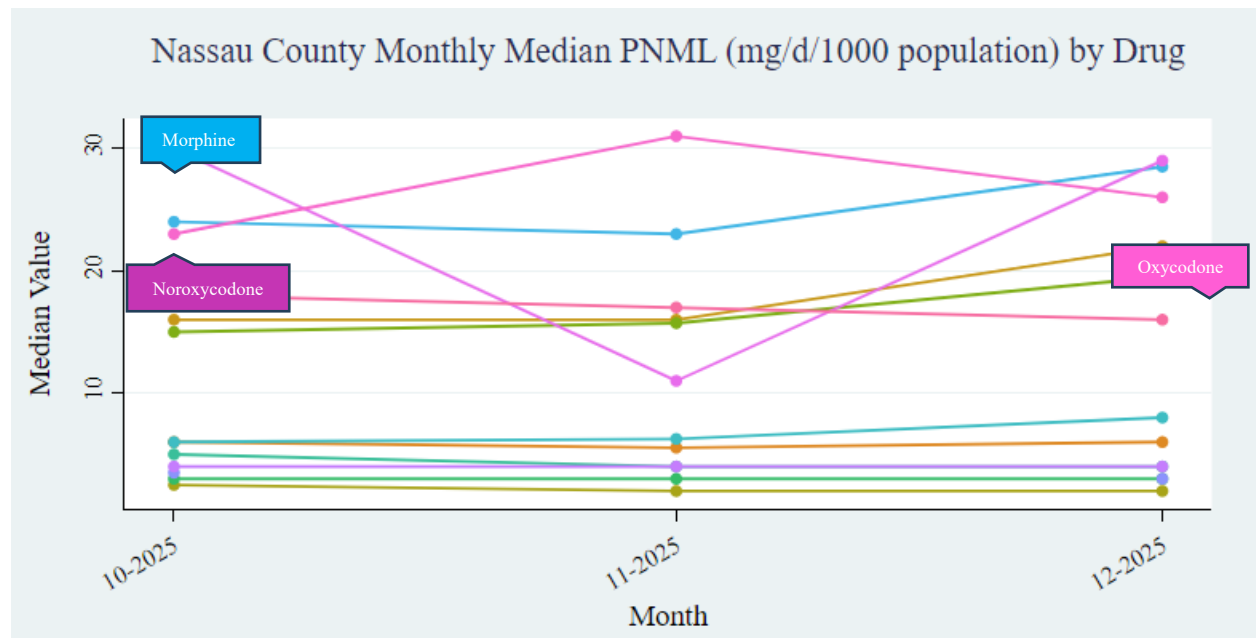
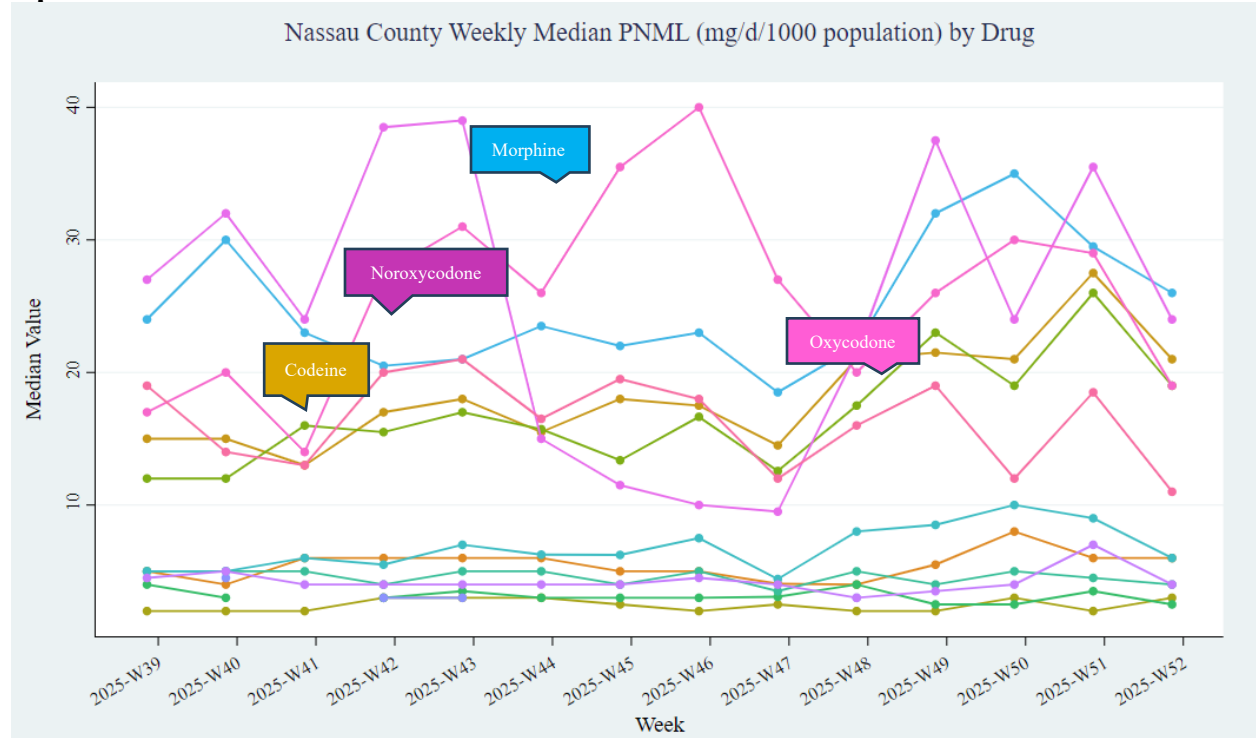
Pathogen Detection

In October Mycobacterium tuberculosis complex (4766 copies/L) was detected in one sample from Long Beach WWTP.

- Isolated and sporadic detection does not require additional action.



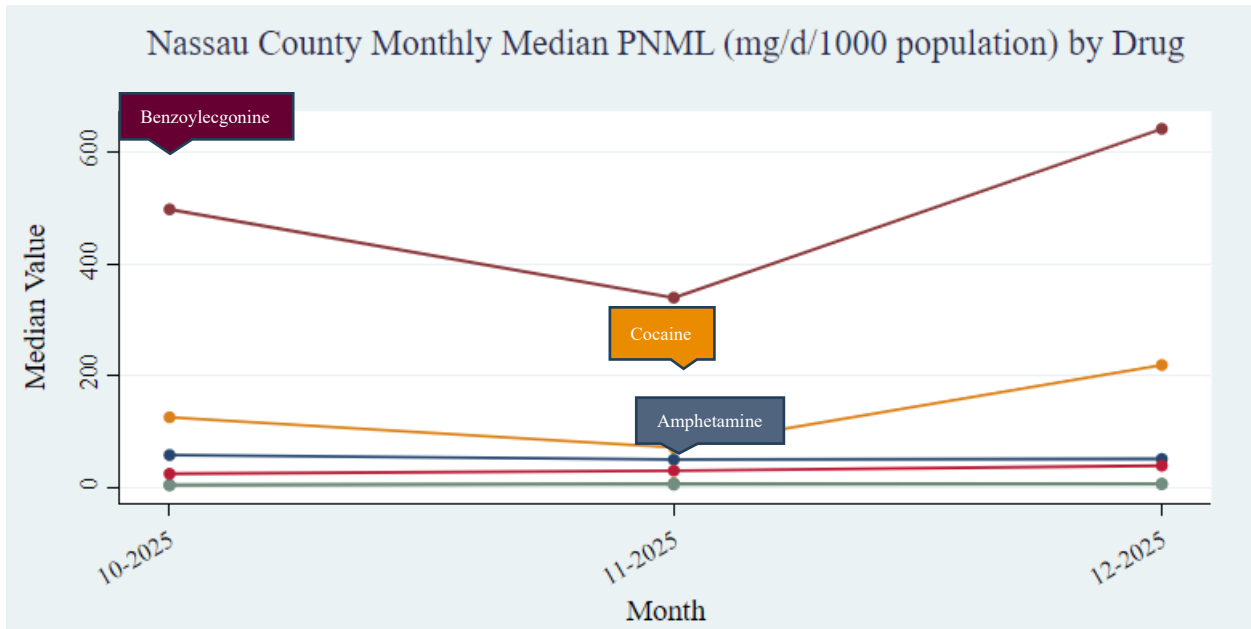
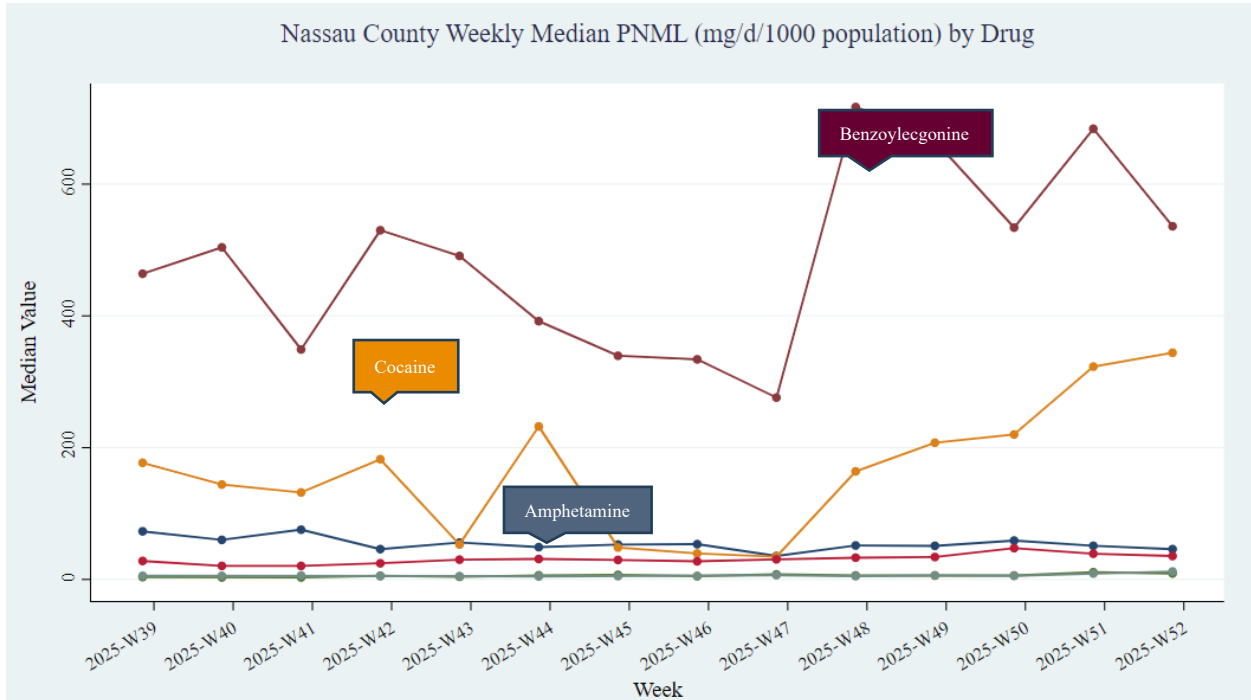
Wastewater Analysis Visualizations
Opioids:



- drug
- (6-Acetylmorphine,1)
 - (Buprenorphine,1)
 - (Codeine,1)
 - (Dihydrocodeine,1)
 - (EDDP,1)
 - (Heroin,1)
 - (Hydrocodone,1)
 - (Hydromorphone,1)
 - (Methadone,1)
 - (Morphine,1)
 - (Norbuprenorphine,1)
 - (Norcodeine,1)
 - (Norfentanyl,1)
 - (Noroxycodone,1)
 - (Oxycodone,1)
 - (Oxymorphone,1)



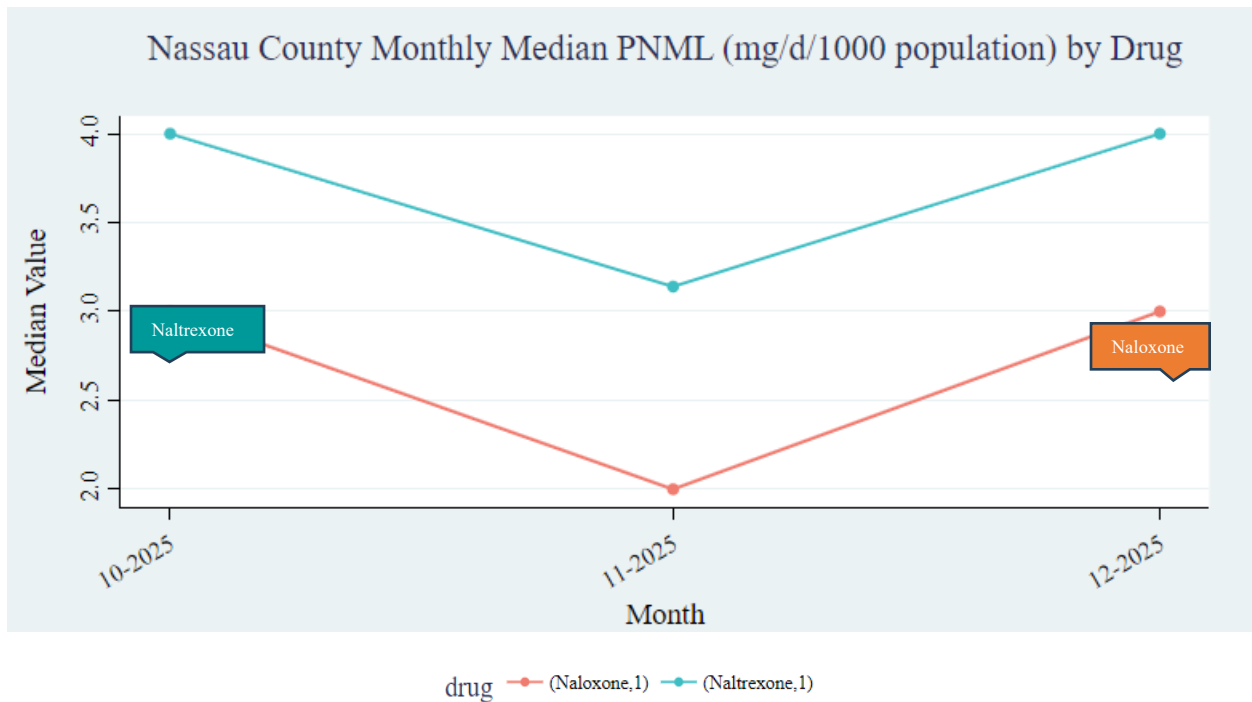
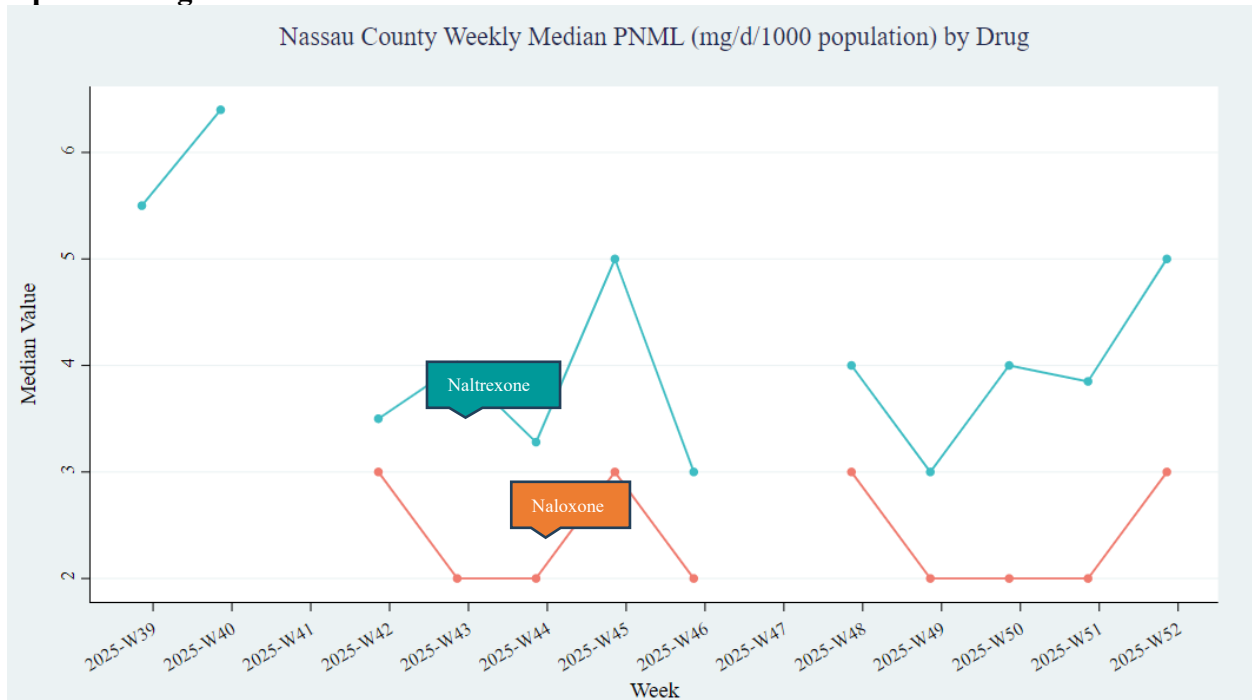
Stimulants:



drug — Amphetamine — Benzoyllecgonine — Cocaethylene — Cocaine — MDMA — Methamphetamine



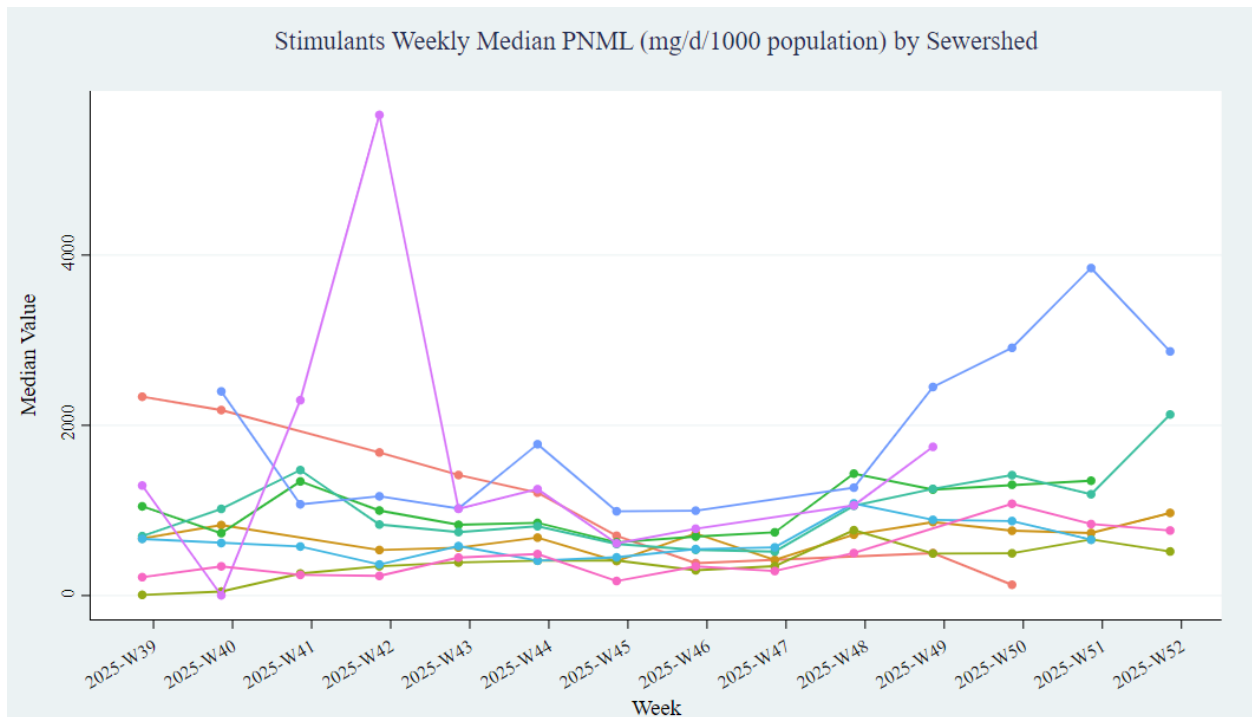
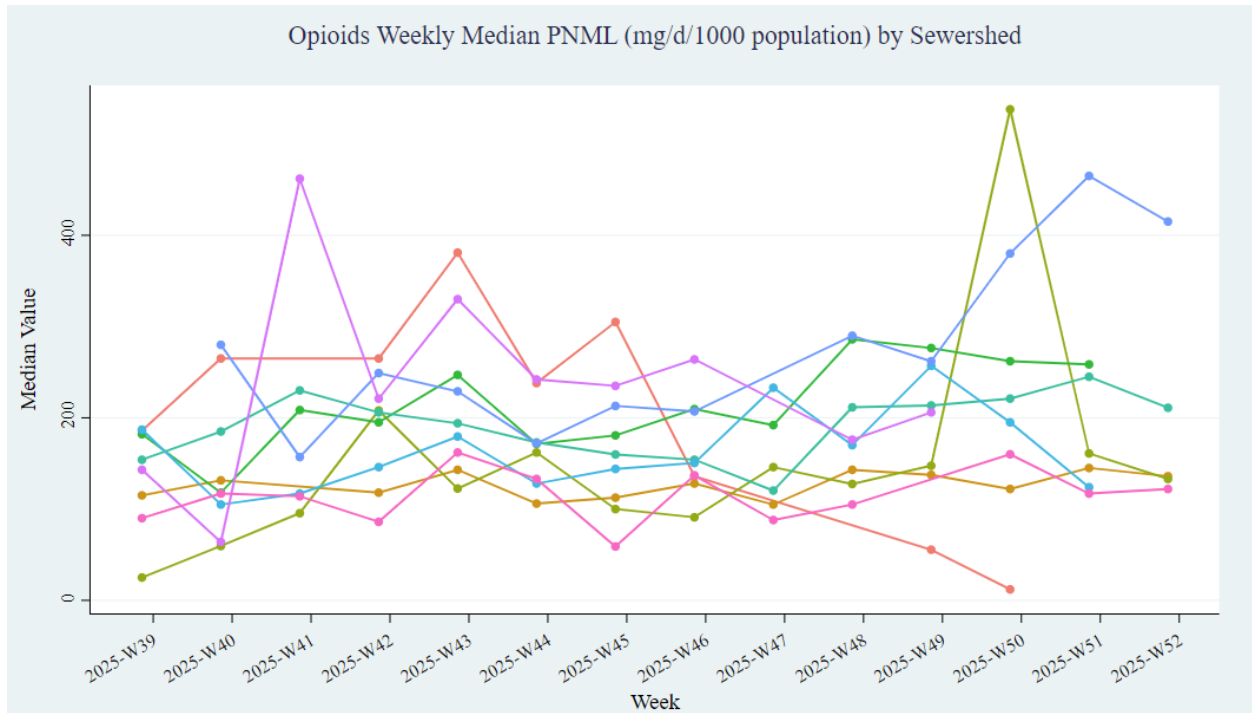
Opioid Antagonists:



Naloxone and Naltrexone have been detected in some locations in Nassau County during the quarter, but often below the current detection limit.

By Sewershed

* When aggregating drugs and metabolites by class, PNML values were summed by class for that collection date, and then a weekly median was taken.



sewershed (Atlantic Beach,1) (Bay Park,1) (Belgrave,1) (Cedar Creek,1) (Glen Cove,1) (Great Neck,1) (Long Beach,1) (Oyster Bay,1) (Port Washington,1)



DISCLAIMER: The Nassau County Department of Health (NCDOH) makes every effort to post accurate and reliable information; however, it does not guarantee or warrant that the information is complete, accurate or up to date. This information is intended solely for the purpose of electronically providing the public with health-related data. The NCDOH assumes no responsibility for any error, omission, or other discrepancies between electronic and/or printed versions of this information. Nassau County and its officers, employees, and/or agents shall not be liable for damages or losses of any kind, including but not limited to direct, indirect, incidental, consequential, special or exemplary damages arising out of, or in connection with, the use or performance of such information, nor damages or losses caused by reliance upon the accuracy of any such information and/or damages incurred from the viewing, distributing, or copying of such materials.

