

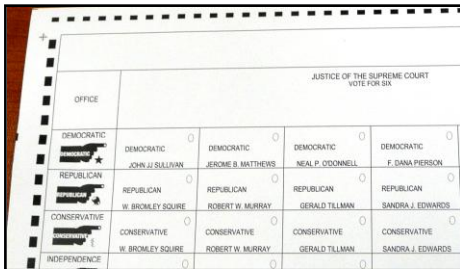
# Voting Electronically in Nassau County



*This guide will show you what to expect at your polling place on Election Day.*

## **STEP ONE: RECEIVE YOUR BALLOT**

After signing the Poll Book (this part has not changed) you will receive a ballot and privacy sleeve from the poll worker. Take them to a privacy booth, where you can mark your ballot in private. You will insert the completed ballot into the privacy sleeve to shield it from view when you take it to the Scanner.



## **STEP TWO: MARK YOUR BALLOT**

You will see an oval above the name of each candidate. To vote for a candidate, make sure that you completely fill in their oval. For write-in-candidates, fill in the oval above the words **"WRITE IN"** and write the candidate's name on the line. Note – check both sides of the ballot.

*As required by federal law, ballots will be printed in English and Spanish*

*Si necesita esta información en Español, por favor llamar al (516) 571-1245*

## **STEP THREE: INSERT YOUR BALLOT INTO THE SCANNER**

Insert your completed ballot into the Scanner.



## **STEP FOUR: WATCH THE SCREEN**

By watching the message on the Scanner's screen, you will know when your vote has been cast successfully. Your vote has now been counted!

If there is a problem with your ballot, follow the instructions on the screen.

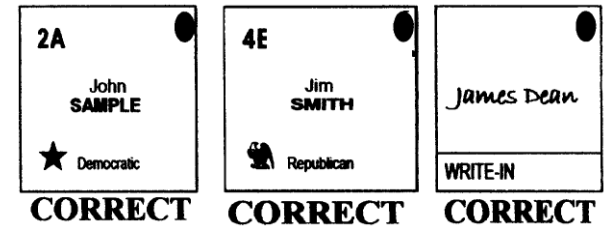
For example, if you voted for too many candidates (an "Over Vote"), or perhaps left a race blank (an "Under Vote"), the machine will give you a chance to get your ballot back. To do that, select **"Correct Your Ballot"** on the screen.

If you would like to cast the ballot without correcting it, select **"Cast Your Ballot With Mistakes."**

## **HOW TO MARK YOUR BALLOT CORRECTLY**

It is important that you mark your ballot correctly so that your votes are counted correctly and accurately.

### **Mark your ballot like this:**



- Mark your ballot by completely filling the oval above each of your choices.
- If you make a mistake, ask the poll worker for a replacement ballot.
- Do not fold your ballot before inserting it into the privacy sleeve or Scanner.

### **Do NOT mark your ballot like this:**



If you have any questions about your ballot, please ask a poll worker for help before inserting the ballot into the Scanner.

*Special ballot-marking devices will be available at every polling place, to assist those who may be physically unable to mark a ballot on their own*

**Go to [www.nassauvotes.com](http://www.nassauvotes.com)**

**to see a video on how to use the new machines and to see a schedule of public demonstrations of the new machines.**